

Involving Dutch industry in Big Science



where business and science meet

www.bigscience.nl



**HANNOVER
MESSE**

Dutch Scientific and Big Science

Holland has been joining many Big Science programs ever since. Examples are: particle accelerators like LHC at CERN, fusion projects like JET and ITER, optic- and radio telescopes like ALMA, the E-ELT and Lofar but also light sources, free electron lasers and neutron facilities. These programs are so expensive that only an international collaboration of member states can make these facilities possible. Scientists are doing a lot of important research which leads to major scientific breakthroughs and long term innovation. We all know the examples: smartphones, satellites, medical diagnostics and therapies, Word Wide Web and of course computers. Regardless that Big Science projects are very important for Dutch scientists who obviously belong to the best in the world, many highly technological skilled companies in The Netherlands are involved in building these large instruments. There is no doubt that innovation is driven by science and the development of scientific instruments. Innovative companies are the first to emerge when a crisis ends.

Dutch Scientific used to be an organisation of firms developing for science in close cooperation with scientific research institutes and their technicians. Now Dutch Scientific has been re-invented by the Dutch Industrial Liaison Officers Network for Big Science and will be supporting all Dutch high-tech systems companies for doing business with Big Science. The Dutch ILO-Net is a network of Industrial Liaison Officers in the Netherlands supported by the Dutch government and NWO – The Netherlands Organisation for Scientific Research that funds thousands of top researchers at universities and institutes and steers the course of Dutch science by means of subsidies and research programs. Since companies indicated are very well equipped for translating their scientific knowledge to commercially applicable solutions, Dutch Scientific proudly presents in this booklet a number of frontline high-tech companies who can support you with any project in which you want to be successful. This booklet will provide and give access to all the information you need to select proper partners for your technological needs.

Hannover, April 2013

For more information please contact

Ir. Toon Verhoeven

Dutch ITER Industrial Liaison Officer
Dutch Institute for Fundamental Energy Research
(DIFFER)
PO Box 1207
3430 BE Nieuwegein
The Netherlands
T:+31 659402853
A.G.A.Verhoeven@differ.nl

Ir. Rob Klöpping

Dutch Industrial Liaison Officer
Netherlands Organisation for Scientific Research
(NWO)
Science Park 105
1098 XG Amsterdam
The Netherlands
T:+31 205922091
klopping@nikhef.nl



www.ITER-NL.nl

www.bigsience.nl

Contents

Iter-nl Ir. Toon Verhoeven	1	Overview of companies	34
The Dutch ILO-Network Ir. Toon Verhoeven, Ir. Rob Klöpping	2	Landes High End Machining Peter Boogaart	36
3D-Metal Forming Hugo Groeneveld	4	MI-Partners Leo Sanders	37
3D Worknet Sander Smit	5	Mogema 3.0 Michel Kurstjens	38
Actemium E&A Elroy van der Schoot	6	MTSA Technopower Rob van der Sluis	39
Advanced Solutions Nederland Dr. Sanjeev Sarpal	7	National Instruments William Baars	40
Amstel Engineering BV André Scharis	8	Nedinsco Bob in den Bosch	41
Amsterdam Scientific Instruments Dr. H.R. Poolman	9	Omics2Image Dr. H. R. Poolman	42
Bayards Aluminium Constructions Ing. Dies W.S. Mackintosh	10	Peter Haak Produktontwikkeling Peter Haak	43
Bodycote Henkjan Buursen	11	Precision Mechanical Production Eric Sens	44
Boessenkool Ing. E.M. Osse	12	S&T A. Bos	45
Carl Zeiss Industrial Metrology Albert Drenth	13	Schelde Exotech Arthur Borsboom	46
Ceratec Technical Ceramics BV Kees A. Visser	14	Single Quantum Floor van de Pavert	47
CryoZone Francesco Dioguardi	15	Stirling Cryogenics Francesco Dioguardi	48
DeMaCo Holland BV HenkJan van der Pol	16	Sumipro Ben Lubberman	49
DARE!! Development Patrick Dijkstra	17	Tebulo Engineering BV John van Stek	50
DEMCON HenkJan van der Pol	18	Tebunus Tube Bending ir. Frank Tuin	51
DotX Control Solutions BV Dr. Ir. J. Schuurmans	19	TechMasters BV Aad van Loon	52
Dutch Space Dr. Eric W. Boom	20	Technobis Group P.L. Kat	53
ECM Technologies Hans-Henk Wolters	21	Tessella Eric Arends	54
EKB Marcel van Deursen	22	TNO B.C.(Ben) Braam MSc.	55
Heemskerk Innovative Technology Dr. Ir. C.J.M. Heemskerk	23	Tree C Gerard Weder	56
Heeze Mechanics Th. van Tongerlo	24	Vacuüm Specials Jan Bos	57
HEINMADE Hein Schellens	25	Van Halteren BV Izaak Veerman	58
Hitec Special Measuring Systems R. Lachminarainsingh	26	VDL Enabling Technologies Group Hans Priem	59
Hositrad Team J.L.J. (Jurgen) Tomassen	27	Veenstra Glazenborg Femme Nauta	60
H.V.P.C. Gerard Bruggink	28	Velmon Lastetechniek Marc Bosman (IWT)	61
Imtech Industry International BV Hans Boer	29	Vernooy Fred Verkerk	62
INCAA Computers B. Sijbrandij	30	Wijdeven Group Rene van den Heuvel	63
Irmco BV Michael Koot	31	Xpress Precision Engineering BV Ernst Treffers	64
Janssen Precision Engineering Huub Janssen	32	ILO's for Big Science	65
Kin Machinebouw Pim Buters	33		

3D-Metal Forming

Product information

3D-Metal Forming B.V. is specialized in metalworking by the use of dedicated explosive materials. New production processes are developed within the company by using CAD, FEM simulations and photogrammetry.

Explosive bonding makes the joining of unique metal combinations possible, such as molybdenum to copper or tungsten to CuCrZr.

3D-Metal Forming B.V. is your partner in developing new solutions.

We can provide a full process and manufacturing chain including e.g. explosive bonding, machining, brazing, electroplating, HIP etc.

Explosive forming provides complex double curved shapes, formed from sheetmetal.

The possibilities in size, shape, metal and sheet thickness are almost unrestricted.

Only one tool part (comparable to a lower die) is needed so that Non Recurring costs are kept to a minimum.

3D-Metal Forming B.V. serves customers Worldwide in the markets Big Science, Energy, Aerospace and Architecture. We continuously develop new, innovative solutions. For example, the development of the explosive forming of large, 60 mm thick stainless steel plates for the ITER vacuum vessel led to the development of an integral Nose Fuselage for Airbus. This component is explosive formed out of one, 100 mm thick aluminum plate, and fully machined after explosive forming. For Airbus this results in significant weight reduction of the Nose Fuselage structure.

References

RES (Cadarache): explosive formed panels of the water basin – ITER (F4E): explosive bonded CuCrZr-stainless steel tube transitions – ITER (RFX): explosive bonded molybdenum to copper, machined and warm formed – MAST (Culham, UK): explosive formed cans for poloidal field coils

Hugo Groeneveld

Manager R&D

Kolkweg 6

8243 PN Lelystad

T: +31 152 15 32 00

hugo@3dmetalforming.com

www.3dmetalforming.com



3D Worknet

3D- Worknet – The 3D mass customization printing company.

Product information

3D Worknet manufactures parts using the latest additive manufacturing technologies (also known as 3D printing). 3D printed parts are often only used as prototypes, but in an increasing number of applications 3D Worknet supplies fully functional end products. Our very efficient production facility is suited for cost effectively manufacturing small to medium sized series of high quality parts.

The 3D Worknet online portal gives our customers a user friendly method to upload 3D CAD data for quoting and ordering. Please visit www.3dworknet.com or call one of our sales engineers for further information.

References

Philips Consumer Lifestyle – Philips Lighting – KLPD – Robert Bosch Packaging – VUmc FMT – UMC Utrecht – ESA / ESTEC – Plasticum Group and many more

Sander Smit
CEO

Maxwellstraat 21
6716 BX EDE
T: +31 318 76 90 77
info@3dworknet.nl

www.3dworknet.nl

 **3D
WORKNET**
the mass customization 3D printing company



Actemium E&A

Actemium E&A is specialist in controls, Printed Circuit Boards, electronic units, machine and modules for the high tech Industry.

Actemium is a tradename of VINCI Energies and consists of a network of cooperating VINCI Energies companies which delivers their products and services to the industrial market. Actemium advises, supports industrial customers in the construction, optimization and maintenance of their industrial production facilities.

Product information

The core competence of Actemium E&A is the development, engineering, production and testing of high tech electro mechanical systems and PCB (printed circuit boards).

Customers of Actemium E&A can be found in Medical, Electronics, Lighting, Optical, Semiconductor, Military, Solar & Energy, Food, Feed, Chemicals, Logistics and Science.

Our capabilities summarized

- Machine controllers and line
- Mechatronics Measuring and testing systems Module Construction Panel Construction (prototypes and serial) Power control cabinets PCB (printed circuit boards) Prototyping Engineering Embedded software Cleanroom UL Panelshop, CE certification Supply Chain Management QMS After Sales (repair and spare)

Project reference EFDA

Actemium built four control units for the new high voltage supply units (160.000V, 130A) for the Joint European Torus (JET) project of UKAEA in Culham – United Kingdom.

The improved supply units will be used to facilitate a higher energy output of the Torus (50 – 70%).

Reference

Philips – ASML – NXP – Bosch – Océ – Canon – Kema – TNO – Vialis – Moba – ASM – van der Lande – Mars – VDL group, Pon Power – Fuji – PANalytical – UKAEA and EFDA.

Elroy van der Schoot
Projectmanager

Eisenhowerweg 39
5466 AB Veghel
T: +31 413 38 44 89
evdschoot@actemium.nl

Turnover: (M)€ 56 | 450 Employees

www.actemium.nl



Advanced Solutions Nederland

Advanced Solutions Nederland is a hi-tech design consultancy that specialises in providing custom made DSP (digital signal processing) algorithms and hardware design services for a broad portfolio of sensor measurement applications.

Product information

Our core competence is the development and implementation of advanced signal analysis algorithms for high performance sensor applications. Typical applications include: noise reduction in speech/audio data, automotive radar tracking algorithms (speed cameras, collision avoidance systems), feature extraction, and non-linear system identification.

Whether you require feasibility advice, critical thinking, or a fully integrated product solution, we offer a comprehensive range of managed services at any stage of your product design. Building upon our track record of providing international businesses with working prototypes, we integrate the best technologies and talents in order to convert your concept into reality.

Summary of core competencies

- Real-time DSP algorithms.
- Non-linear signal analysis.
- Simulations.
- Embedded software.
- Low noise, ultra-precise instrumentation and measurement systems.
- Prototypes.
- Proof-of-concept demo systems.

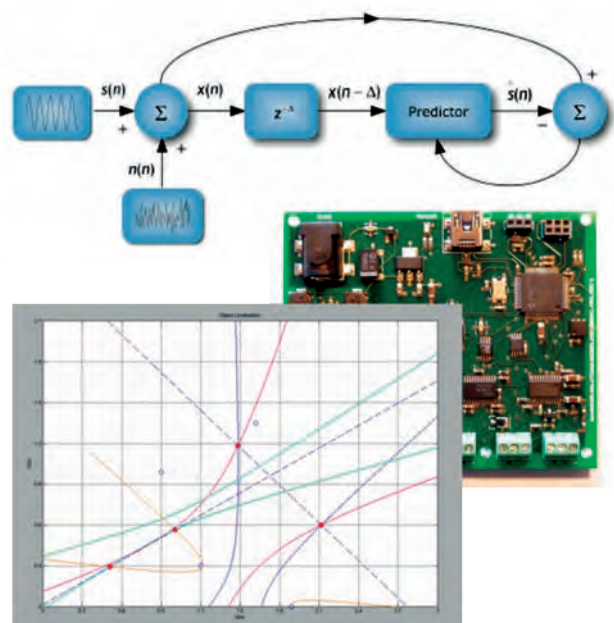
Selected references

Mitsubishi Electric (UK) – Shell (NL) – Etronic (DK) – Hi-tech RF & Microwave solutions (NL) – Gatsometer (NL) – Gnoka (NL) – NeuroRobotics (UK).

Dr. Sanjeev Sarpal
Director

Lipperkerkstraat 146
7511 DD Enschede
T: +31 624 93 97 18
info@advsolned.com

www.advsolned.com



Amstel Engineering BV

In business for more than 25 years, Amstel Engineering offers advanced Mechanical Engineering services to customers that help them in developing complex mechanical designs and products. Our customers call on our expertise to design or evaluate critical components for reasons such as reducing cost, reducing time-to-market, increasing load capacity and extending life span.

End-to-end capability

Amstel Engineering's capabilities in providing solutions throughout the product development life cycle from conceptual design, industrial and mechanical engineering design, CAD modelling and detailing, to simulation, analysis and prototyping, product testing and manufacturing, makes Amstel Engineering a unique one-stop solutions provider for Engineering Services.

Clients outsource their engineering work to Amstel Engineering, allowing them to focus on their core competencies. We not only solve unique engineering challenges, we manage the routine day-to-day engineering tasks that many clients no longer can complete in house.

Dedicated staff

We are staffed by professional engineers and designers with extensive experience and expertise in engineering design and 3-D drafting in a range of industries. We focus on delivering technically accurate and scientifically sound solutions based on our training and industry knowledge.

Proven expertise

We have a proven track record of providing complete Mechanical Engineering solutions for customers in verticals like Aerospace, Automotive, Rail, Material Handling, Food Processing and Retail.

What does that mean for you? When you partner with Amstel Engineering, you can depend on better value, faster delivery, superior products and services and a collaborative relationship throughout your project – as well as an engaged, expert partner for the life of your business. Amstel Engineering is part of the Neitraco Groep.

References

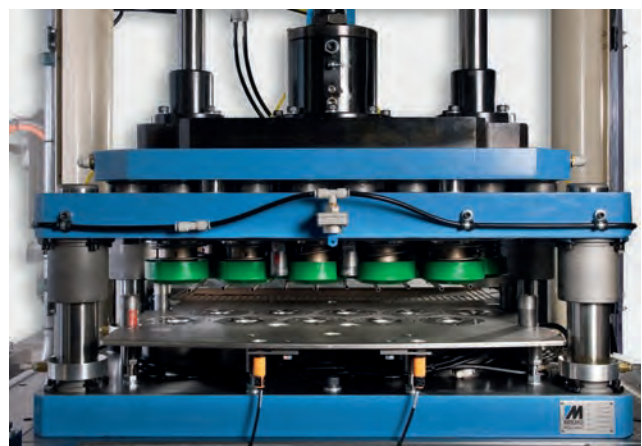
ASML – Nikhef – ECN – Dutch Space – Philips – ASM – Vanderlande Industries – Stork/Fokker – Multin Hittech – SKF

André Scharis

Commercial Manager

Joan Muyskenweg 22
1096 CJ Amsterdam
T: + 31 206 68 06 06
info@amstel-engineering.nl

www.amstel-engineering.nl



Amsterdam Scientific Instruments

We offer you the benefits of cutting edge detector technology developed by the Medipix collaboration lead by CERN. We continuously improve our products.

Our customer-focused team consists of scientists and engineers with a vast global experience covering all aspects of particle detector technology. We close the gap between innovation at the frontier of science and ready-to-use products for science and industry.

Product Information

Our Timepix hybrid pixel detectors can be used in a wide range of applications.

Besides X-ray imaging, ASI detectors are used for precise spatially resolved detection of electrons, neutrons and heavy charged particles.

Conventional detectors use a counting method. We offer clever pixels: every pixel can operate in three different modes. These are counting mode, time-over-threshold and time-of arrival mode.

For more information on our products, please visit our website:

amscins.com or write us an email: info@amscins.com.

References

Nikhef, NL

AMOLF, NL

Reactor Instituut Delft, NL

Royal Adelaide Hospital, AU

Tribogenics, USA

Brookhaven National Laboratory (BNL), USA

Princeton Plasma Physics Laboratory (PPPL), USA

Stanford (SLAC/LCLS), USA

Dr. H.R. Poolman

CEO

Science Park 105

1098 XG Amsterdam

T: +31 20 592 20 71

info@amscins.com

10 employees

www.amscins.com



AMSTERDAM
SCIENTIFIC
INSTRUMENTS



Bayards Aluminium Constructions

Bayards Aluminium Constructions is an internationally recognized and qualified company that is renowned for their innovative solutions in aluminium.

Product information

Bayards Aluminium Constructions is an internationally recognized and qualified company that is renowned for their innovative approach to design, fabrication and assembly of complex aluminium products and projects.

Bayards has the expertise, know-how and technology to manufacture hi-tech aluminium products to an unrivalled standard of quality.

Bayards production capabilities are endless, but to name a few:

Welding: We make use of the newest development in welding technology, e.g. Friction Stir Welding (FSW).

Milling: With our CNC 5-axes profile high speed milling machine, we are able to carry out precision milling activities on components with a length up to 18 meters. Furthermore, to facilitate fabrication and assembly processes, we have in our employment highly qualified welders.

References

CERN: production of bottom tray LHC – Stork / Fokker: components for Patriot rocket – Dutch space: parts for new generation Ariane rocket – KEK, Japan: parts for particle accelerator

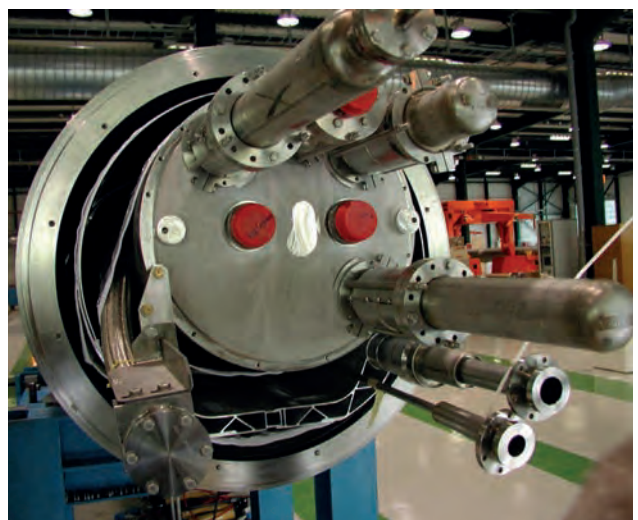
Please visit our website for more information and track records.

Ing. Dies W.S. Mackintosh
Managing Director

Veerweg 2
2957 ZG Nieuw-Lekkerland
T: +31 184 68 30 00
dies.mackintosh@bayards.nl

Turnover: 25 M€ | 125 employees

www.bayards.nl
BAYARDS®
solutions in aluminium



Bodycote

Bodycote Vacuum Brazing has been engaged in advanced brazing techniques for about 40 years. During these years an extensive know-how and vast practical experience have been built, unique for the industry. Practically all types of base metal, filler metals and brazing processes are being applied to hundreds of different products. Bodycote Vacuum Brazing has several different types of brazing furnaces available for basic research, product development and production. Bodycote Vacuum Brazing is ISO 9001, ISO 14001 and ISO 50001 certified.

Product Information

In the high temperature brazing process joints are generated in a vacuum atmosphere. The combination of high temperature and reducing atmosphere ensures metal oxides dissociate at the product surface. The process results in very strong joints (90-100% base metal strength) Due to the automated furnace control these joints can be reproduced with a constant high quality.

Bodycote Vacuum Brazing Diemen provides the following services

Vacuum brazing – Special heat treatments in vacuum or reducing atmosphere – Consulting for material selection and design of braze joints

Materials regularly handled

Low and high alloy steels – Tool steel – Cast Iron – Stainless steel – Copper alloys – Titanium alloys – Superalloys – Carbides – Ceramic, composites, graphite

Markets served

Power Generation and Energy – Oil & Gas – Measuring & Control – High precision tooling – Lithography – Aerospace – Pharmaceuticals – Science/research – Plastic Moulding

Henkjan Buursen

Plant Manager

Bodycote Hardingscentrum BV
Bodycote Vacuum Brazing
Visseringweg 28
1112 AS Diemen
T: +31 20 560 10 80
henkjan.buursen@bodycote.com

50 employees

www.bodycote.com



Boessenkool

Machinery Manufacturer Boessenkool: knowledge, competence and facilities. Co-maker mentality. Pro-active thinking and handling. Based on a complete knowhow and service mentality. Engineering, steel structures, metalworks, mounting facilities and mechanical machining. When needed also supplied with controls, electronics and final treatment. For that reason "Made by Boessenkool" is a guarantee for quality and success to many of our customers.

Product information

Product	Description	Customer
Beampipe Bake Out Shell	Beampipe for electrons, matter research	CERN (CH)
Revolver Mobile Undulator Carriage	Electron fibrillation tool , matter research	E.S.R.F. (FR)
Galacsi Structure + Graal Tools	Alu structure to mount mirrors for space research	E.S.O. (D)
Product & Utility Swivel	Off-shore FPSO (Oil Production & Storage Unit)	Bluewater Energy Services (NL)
Rotary Bottle Filling machine	Bottle filling machine for the food industry	Stork (NL)
Compression Piston Rods	Piston Rod for high pressure compressor	Thomassen Compression (NL)
Rollers & Shaft for Test Bench	Rollers & Shaft of a testbench for trucks diam. 5 mtr.	Froude Hofmann (GB)
Warehouse Stacker Crane	Order picking unit for warehouses upto 40 mtr. height	FKI Logistex (World Wide)
Vacuum Vessel	Vacuum vessel for Wafer-Stapper production	ASML (NL)
Bearings & Gears	Bearing & Gear for Windmills upto 4 mtr. Diam.	Siemens (D) / Flender (D)
Services	Description	Max. weight
Milling	Upto 10 meters to 4 meters to 2 meters	60 tons
Boring	Upto 10 meters to 4 meters to 2 meters	60 tons
Turning	Upto 6 meters length with a diameter of 1 meter	20 tons
Vertical Turning	Upto 5 meters diameter with a height of 4 meters	60 tons
Fabrication	To customer specifications	120 tons
Welding	Certified welding in all materials and thicknesses	120 tons
Machine-building	Hardware incl. electronics, pneumatics and hydraulics	120 tons
Assembly	Products upto 60 meters with weight upto 120 tons	120 tons
Project-management	Projectmanagement incl. traceability	
Powder coating	Upto 4 meters long	
Hoisting	Hoisting capacity inside the factory is 120 tons	Max. 120 tons

Ing. E.M. Osse
CEO

Tufkade 13
7602 PA Almelo
T: +31 546 48 88 00
info@boessenkoolbv.nl

Turnover: 5 M€ | 40 employees

www.boessenkool.com



Revolver Mobile Undulator Carriages for the E.S.R.F. in France. Repeating Parallelism tolerance between the beams is 0,05 mm over 2,5 meters incl. beam rotation.



Large Welding constructions including the Large Machining against small tolerances in just one factory!

Carl Zeiss Industrial Metrology

A CNC coordinate measuring machine (CMM) is only as good as the information it provides. Information that can save time by improving processes, save money by reducing scrap, and help in the production of high quality parts. Carl Zeiss is a leader in CMMs and complete solutions for multidimensional metrology in the metrology lab and production. The company is a recognized partner to the high-tech industry and its suppliers.

The offering encompasses bridge-type, horizontal-arm and inline measuring machines, as well as form, contour and surface measuring machines. All relevant modules, such as controllers, software, measuring systems and sensors are developed and manufactured in-house. This total system design results in precision of your metrology equipment and accurate results.

Recent new developments include a system to measure extremely small parts and a computer tomograph for industrial quality assurance. With its optical and tactile measuring systems, Carl Zeiss has added image processing to the application spectrum of coordinate measuring technology. Synergies have been used to create optical sensors and optimized software. The extensive CALYPSO software library enables users of ZEISS measuring technology to perform almost any measuring task.

The offering is rounded off with extensive customer services, contract measurements, part inspection using computer tomography and services to ensure optimum machine uptimes.

Products

Systems – Precision metrology products, including CMMs, surface & form, CT, optical, and more.

Software – Measuring, evaluation and management software to increase the performance of your measuring operations.

Sensors – Contact and optical sensors, even for the most sensitive surfaces. From VAST active scanning to laser to RDS articulating.

Accessories – Fixturing, styli & accessories, and system-specific options.

Services

Software/Hardware Services – Services for your CMM to ensure highest reliability and performance.

Training – Trainings for measuring software, statistic and reporting software and more.

Measuring Services – Contract measurements, calibration and contract programming in our Benelux Measuring House in Best.

Metrology Solutions

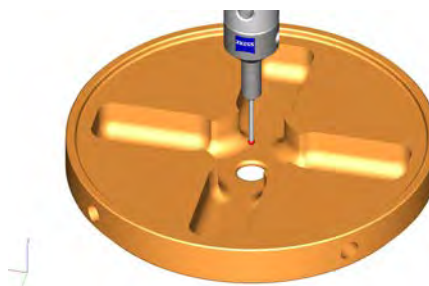
Automotive – Machinery – Aerospace – Medical – Energy – Plastics

Albert Drenth

Business Unit Manager

Trapezium 300
3364 DL Sliedrecht
T: +31 184 43 35 51
info@zeiss.nl

www.zeiss.nl



Ceratec Technical Ceramics BV

Ceratec Technical Ceramics BV has specialized in industrial technical ceramic components since 1983. Ceratec's strength lies in the complete formula of problem analysis, development, prototyping and production. Alongside various processing techniques, special joining techniques are applied for production of composite products made of technical ceramic and metal. The requisite metal-working processes and assembly activities are carried out in-house. We produce both small and larger series. Ceratec develops and manufactures products made of technical ceramics for customer-specific applications.

Production capabilities

Green stage shaping and sintering – OD grinding, max 500mm, max length 1500mm – Honing min 0.6 mm inner diameter – Flat and profile grinding – Centreless grinding min 1mm, max 60mm (tolerance 2 microns) – Lapping with surface roughness of Ra 0.01 um – Coördinate grinding – Drilling of small holes, min 0,3 mm – 4-axis CNC grinding – CNC OD grinding – CNC turning and milling – Brazing of ceramics and corrosion resistant steel.

Assembly of metal ceramic components

We are a main supplier for various kinds of industries; mechatronics, semiconductor, space & aerospace, medical, automotive, energy, optical, (petro)chemical, R&D, pump industry etc. The ceramic precision products we supply are engineered in house, designed with solid works & cosmos, green shaped & sintered and ground with state-of-the-art (CNC) grinding machines.

Following properties make our ceramic components successful; low density, high stiffness, electrical insulator, suitable for high vacuum, wear resistant, smooth surfaces, corrosion resistant, non-magnetic.

Ceramic on the right spot!

Kees A. Visser
Director

Poppenbouwing 35
4191 NZ GERMALSEN
T: +31 345 58 01 01
k.visser@ceratec.nl

www.ceratec.nl



CryoZone

CryoZone stands for expertise in the field of cryogenic engineering. We deliver custom-made cryogenic solutions that are ready for use as functional hardware. This makes our products and systems ideally suited for OEM system builders.

Product information

CryoZone offers an extensive range of products such as cryogenic circulation fans, liquid gas pumps, heat exchangers for cryocoolers, cryostats, vessels and phase separators. Our expertise extends to everything that involves the control and circulation of cryogenic fluids and gases, such as LN2 and GHe, to cool and heat an application. We handle every aspect of the cryogenic process related to coding, cryogenics, pressure, heat and physical flow.

Products

- Cryogenic fans for He and N2
- Pumps for cryogenic gases
- Cryostats
- Vessels
- Valve boxes

References

TNO, Eindhoven, Netherlands – Cryogenic / high temperature system
Florida State University, Tallahassee, USA –
20K cooling system for HTS

Francesco Dioguardi
Commercial Manager

Ekkersrijt 4611
5692 DR Son
T: +31 402 67 73 80
info@cryozone.nl

8 employees

www.cryozone.nl



DeMaCo Holland BV

If you are looking for...

- Support in Cryogenic Engineering
- Cryogenic expertise in manufacturing and installation of your Cryogenic Infrastructure like
 - Helium Transfer Lines
 - Helium Distribution Valve Boxes
 - Helium Interconnections between your facility and the storage tank or liquefier
- Cryostats
- Liquid Nitrogen Systems
- Optimisation or Modification of your existing Cryogenic Infrastructure

...please don't hesitate to contact us and send us your enquiries. It will be our pleasure to provide you with a suitable proposal with your Cryogenic Solution!

As a Partner in Cryogenics and Vacuum Technology, we are continuously investing in technological innovations and optimisations.

As a matter of fact our company has been accredited to ISO 9001, SCC**, ISO 3834-2 and PED H/H1

References

CERN

- Multiple Helium Transfer Lines for LEP, LHC, ATLAS and CMS
- UHV-chambers for LEP separators
- Helium Siphons
- Liquid Argon Valve Box

DESY

- HERA-by-pass Helium Transfer Lines
- Bunch Compressor bypass pipelines I and II
- Helium Valve Boxes and Transfer Lines for the X-FEL Test Facility
- Extension for the TTF Transfer Lines

ESA

- Main Valve Boxes for the LSS Satellite Test Facility
- LN2 Transfer Lines and Phase Separators

Triumf – NSRRC – ESRF – KIT – GSI – ITER – PSI – ISRO – NIKHEF – Helmholtz – Max-Planck

Ronald Dekker

Director

Oester 2
1723 HW Noord-Scharwoude
T: +31 226 33 21 00
info@demaco.nl

65 employees

www.demaco.nl



DARE!! Development

DARE!! Development is a Research & Development company based in Woerden, The Netherlands, specialized in the development of analog RF and EMC measurement instruments. In the past 20 years DARE!! has acquired a strong name in RF electronics. With the successful implementation of several daring RF projects for civil and military use, DARE!! Development is always stretching the limits.

Specific expertise includes

Our expertise lies in the field of:

- RF signal generation
- Analog LASER applications
- Custom made RF filters
- Custom made RF mixers
- Custom made antennae, including custom patch antennae.

In our state of the art facilities we can simulate designs, build fast prototypes and perform accurate measurements. As we can perform the total activities in house we have an very fast research and development cycle. Next to the hardware development we have our own embedded software team which has also expertise in the RF field.

References

DARE!! Development has performed projects for Dutch Defense, Dutch Government and many private companies. Our measurement systems are sold worldwide to renowned customers. Recently a RF power meter has been developed for the linear accelerator of DESY, Hamburg, Germany. This unique power meter is capable of measuring RF signals till 18 GHz at an unprecedented measurement speed of 1 Msamples/sec. At this moment the measurement speed is increased to 5 Msamples/sec. At the same time a trigger input/output is added.

Patrick Dijkstra

Technical Director

DARE!! Development
Vijzelmolenlaan 7
3447 GX Woerden
T: +31 348 43 09 79
development@dare.nl

45 employees

www.dare.eu/development

DARE!!
Development



DEMCON

About DEMCON

DEMCON researches, develops and produces high-tech systems and products for our focus areas of high-tech systems and medical devices. Due to our production capabilities, DEMCON can differentiate our self from other suppliers. Our clients receive not only a blueprint but also a working product or system.

Markets

DEMCON is a high-end supplier of technologies for the high-tech systems and medical devices markets. Within these markets, our focus is primarily on development and production.

DEMCON is highly proficient at applying, technical skills and high level of expertise in order to come up with surprising solutions to complex problems. The knowledge gained in one market enables us to look at problems in other markets in an open and creative manner.

Capabilities

We have employees from a wide range of technical disciplines in every project group and make use of a large number of facilities.

- Mechanical engineering
- Software engineering
- Electronics engineering
- Industrial design
- Physics/optics
- Clean room
- Prototyping
- Production

References

Philips – ASML – FEI – DORC – SIEMENS – TE Connectivity – Bronkhorst

HenkJan van der Pol

Business Manager Hightech systems

Zutphenstraat 25
7575 EJ Oldenzaal
T: +31 541 57 07 20
info@demcon.nl

Turnover: 20 M€ | 140 employees

www.demcon.nl



DotX Control Solutions BV

DotX Control Solutions specialises in high performance control system development and the realisation thereof. It develops control solutions for complex industrial challenges and scientific research projects.

Product information

One of the DotX main products is the DotX Nonlinear Predictive Controller (DNPC); this controller allows extremely accurate control, due to its ability to simulate and optimise complex nonlinear dynamical systems on-line in a stable and fast manner. This controller has applications in various processes (furnace control, temperature control) and mechanical systems (wind turbines).

Specific expertise includes

- Development of high performance control solutions including NMPC, H_{∞} , and ILC
- Control-oriented modelling of complex systems
- Observer design for high performance controllers
- Development of advanced model based fault detection
- Integration of commercial control software systems in real-time environments and simulation environments

References

ECN – Tata Steel – ISPT – 2B Energy – EWT – STX – DSM – VDL Weweler – Mitsubishi

Dr. Ir. J. Schuurmans

Director

James Wattstraat 23

1817 DC Alkmaar

T: +31 618 96 65 95

j.schuurmans@dotxcontrol.com

Turnover: 0.2 M€ | 3 employees

<http://www.dotxcontrol.com>



Dutch Space

Dutch Space is the largest space company in The Netherlands. It develops complex systems for space, civil & defence applications and is a System Integrator for multidisciplinary, multinational programmes. Subsidiary of EADS Astrium N.V.

Product information

Building on over 40 years of heritage, Dutch Space has acquired considerable expertise in the areas of both organizational/programmatic skills and in-depth engineering supported by advanced in-house tools and facilities, which can readily be applied to complex large research infrastructures. Typical space applications primed by Dutch Space are:

- the European Robotic Arm for the International Space Station, providing valuable heritage for ITER Remote Handling
- the main engine frame of the Ariane 5 launcher, a complex and technically demanding structural element
- various space instruments and subsystems for earth observation & astronomy, providing heritage for ITER diagnostics

Specific expertise includes

- Management of international multidisciplinary development projects
- Engineering for vacuum, cryogenic and other complex/hostile environments: thermo-mechanical & thermodynamic analysis; coolers, hot structures & thermal protection systems; advanced materials & processes; complex mechanisms.
- Control & robotic systems
- Real-time simulation and data-processing s/w environments

References

Customers include ESA, ESO, NASA and large European space contractors. Next to many ESA projects, Dutch Space has contributed to LOFAR, VLT, E-ELT and is preparing for ITER contributions. Dutch Space is a key player in the high-tech industrial and institutional networks in the Netherlands.

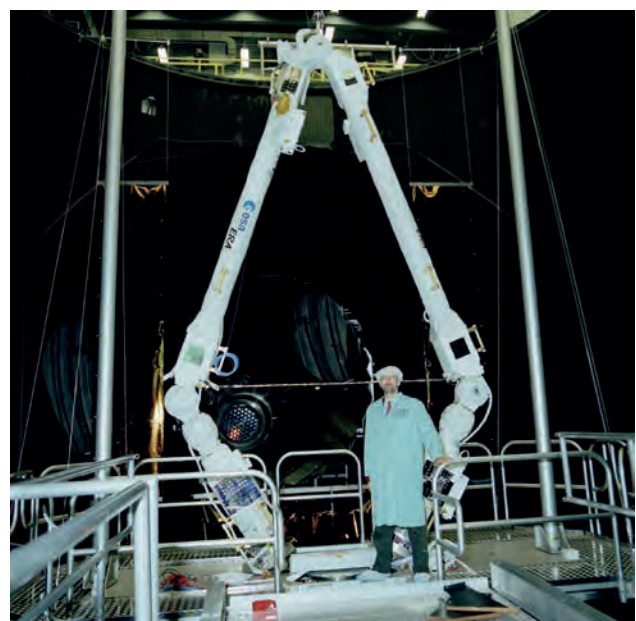
Dr. Eric W. Boom

Business Development Manager

Mendelweg 30
2333 CS Leiden
T: +31 715 24 58 20
E.Boom@dutchspace.nl

Turnover: 75 M€ | 230 employees

<http://www.dutchspace.nl>



ECM Technologies

ECM Technologies is specialized in the development of Electrochemical Machining processes. ECM is a non conventional metal machining technology based on electrolysis.

Product information

ECM Technologies develops electrochemical machining processes for metal products of complex geometry (i.e. Turbine blades) that can hardly or not at all be made by conventional machining processes. The ECM technology is very suitable for products of super alloys even in large series.

Characteristics of the ECM process

- The product after processing is free of burrs.
- No-contact process principle, no mechanical forces.
- The process does not cause thermal or physical strain in the product.
- Unlike other machining techniques, no upper-layer deformation occurs.
- 3-Dimensional products can be processed in one single step.
- High surface quality level attainable ($R_a < 0,02 \mu\text{m}$) depending on material used.
- High dimensional accuracy attainable
- Material strain which loosens during the process will be compensated where possible
- Stainless steels are affected by various conventional machining techniques in the upper-layer, as a result of which local rust formation can occur. This is not the case with ECM
- Using the ECM technique generates more freedom in design for a product
- ECM is a technique with a high machining speed at relatively low costs

References

ECM Technologies has developed ECM processes for companies worldwide in the field of Aerospace, Automotive, Medical, Energy market and for many other different applications.

Hans-Henk Wolters

CEO

Ceresweg 42
8938 BG Leeuwarden
T: +31 622 37 97 50
wolters@electrochemicalmachining.com

Turnover: 1.0-1.2 M€ | 5 employees

www.electrochemical-machining.com





EKB is a system integrator for industrial automation projects. EKB provides automation solutions within the process and manufacturing industry with over 200 committed and qualified employees. A high quality system according to CSIA-regulations and thorough project management, makes EKB a reliable partner.

EKB was founded in 1971 and has developed into a nationwide operating and well-reputed industrial automation company located at four places; Beverwijk, Drachten, Bunnik and Someren. EKB is also member of the listed TKH Group, an international operating group of companies in the field of Telecom, Building and Industrial Solutions making an annual turnover of more than 1 billion euro.

EKB is synonymous with product and process automation.

Marcel van Deursen

Commercial Manager

Lage Akkerweg 17
5711 DD Someren
T +31 493 49 66 65
somerens@ekb.nl

210 employees

www.ekb.nl



Heemskerk Innovative Technology

Heemskerk Innovative Technology offers strategic and operational consultancy in the areas of robotics, mechatronics and hightech systems, and primarily targets the European institutional market.

Product information

Innovation Management – Heemskerk Innovative Technology (HIT) blends innovation management, systems engineering, and people management to support research projects and to develop spin-offs into proof of concept and market readiness, working in close cooperation with Institutes, Universities, and industrial partners.

ITER Remote Handling studies – During operation, plasma facing components of the experimental fusion reactor ITER will get activated and contaminated with radioactive and toxic materials. Remote Handling (RH) maintenance is performed by master-slave telemanipulation techniques. Heemskerk Innovative Technology develops new RH technologies and tools and validates RH maintenance sequences.

Virtual Slave – In an industrial partnership with Dutch Space and TreeC, HIT develops a simulation tool to simulate in real-time kinematics, dynamics and physical interaction of designs and environments imported from CAD software. The Virtual Slave system is multifunctional; it can be used to analyse the maintainability of components in the design phase, to validate maintenance procedures, to train operators and to provide operational support during maintenance operations.

References

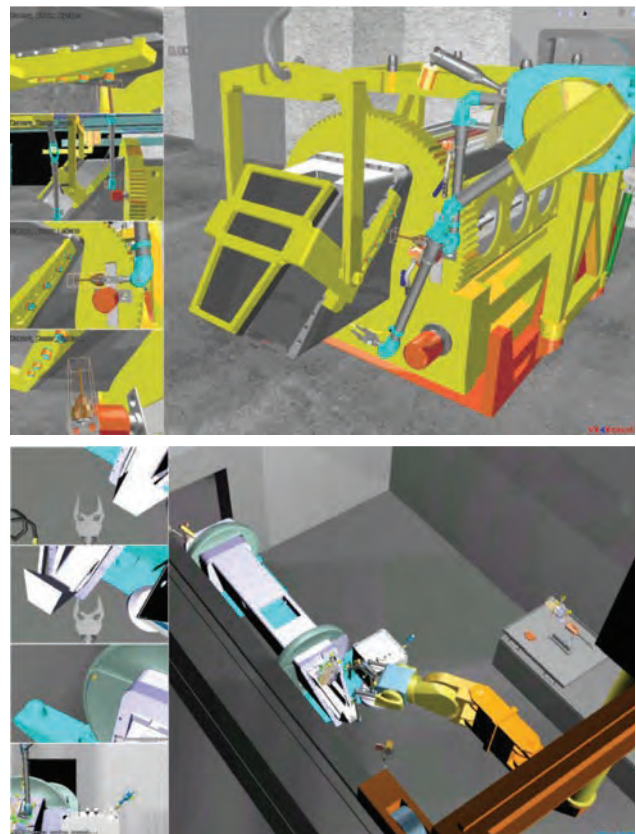
ITER – Dutch Space – FOM Insitute DIFFER – FlexGen – TNO – Oxford Technologies – VDL APTS

Dr. Ir. C.J.M. Heemskerk
Managing Director

Merelhof 2
2172 HZ Sassenheim
T: +31 651 34 09 66
c.heemskerk@heemskerk-innovative.nl

Turnover: 400.000 € | 7 employees

**www.heemskerk-
innovative.nl**



Heeze Mechanics

Design and Precision Engineering for R&D Institutes since 1966; manufacturing of microwave components i.e waveguides, parts for Clic, parts for long en short Yoke, cartridge plate for RAL and parts for Galaxy.

Product information

- Design and Precision Engineering for R&D Institutes since 1966.
- Manufacturing of Waveguide (FOM), parts for Clic (CERN), parts for long en short YOKE (CERN).
- Cartridge plates for RAL (Rutherford Appleton Laboratory).
- Parts for Galaxy (ESO).

References

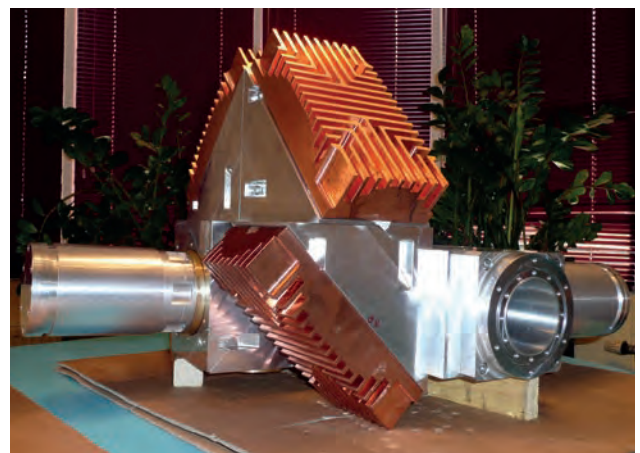
CERN – ESRF – ESO – Rutherford Appleton Laboratory – TNO – OMT solutions – Rimas – Philips Research – FOM

Th. van Tongerlo
Managing Director

Kapelstraat 10
5591 HE Heeze
T: +31 402 24 01 78
th.van.tongerlo@heezemechanics.nl

Turnover: 800,000 € | 5 employees

www.heezemechanics.nl



HEINMADE

HEINMADE develops and delivers piezo system solutions ranging from a single bulk piezo to servo controlled multiple axis motion platforms. With our long term experience and extended network, we are able to detect critical aspects, to control and solve these aspects and to provide reliable solutions.

Product information

Through collaboration with Noliac (DK), Nanomotion (Isr) and Piezomechanik (DE), HEINMADE offers a wide portfolio of standard products and system solutions. Over the years HEINMADE has extended this portfolio with developed custom made designs to meet the high demanding requirements of the high tech and medical industry.

Some examples of systems in production are; multiple axis long stroke motions systems, transducers, sensors and active damping systems. Present R&D work is focused on active damping, accurate dispensing and high force high precision stages. HEINMADE supplies basically all piezo related components and (sub-) systems:

- R&D work on piezo components and integrated systems.
- Design, engineering and supply of high precision metal parts like hinge structures, etc.
- (Encaged) Piezo actuators and benders (high and low voltage).
- Piezo motors and steppers.
- Short and long stroke piezo stages (actuator and motor based).
- Drivers and controllers for piezo actuators and motors.
- Active vibration dampers.
- Dispensing systems for low vapour pressure or high viscous substances.

References

Philips Apptech – ASML – ESO – TNO – TU Delft
– TU Eindhoven – TU Twente – VSL (NMI) – FEI

Hein Schellens

Director

High Tech Campus 9
5656 AE Eindhoven
T: +31 408 51 21 80
hein.schellens@heinmade.com

Turnover: 1.0 M€ | 7 employees

www.heinmade.com

HEINMA²DE
supplier piezo ceramic solutions



Hitec Special Measuring Systems

Hitec Special Measuring systems bv provides high precision current measuring systems for the research institutes and scientific applications all over the world.

Product information

Hitec Special Measuring systems designs and builds Zero-flux current measuring systems.

Hitec Special Measuring Systems, part of the Hitec Power Protection Group, was the first to introduce a revolutionary high precision current measuring system based on the Zero-flux principle. The bipolar Zero-flux measuring system optimizes the concept of galvanic separated measurement of direct and alternating currents with exceptionally high precision.

Today thousands of these systems found their way in scientific, HVDC, industrial and medical applications all over the world. Having a reputation of being the ultimate system for measuring electrical currents.

References

CERN – ABB – Siemens – ASML

R. Lachminarainsingh

General manager

Bedrijvenpark Twente nr. 40
7602 KB Almelo
T: +31 546 58 95 89
info@hitecsms.com

Turnover: 3 M€ | 7 employees

www.hitecsms.com



Hositrad Team

The Hositrad Team combines more than 45 years of experience in vacuum and cryogenic technology. We supply standard vacuum part CF, KF and ISO components from stock.

Product information

Hositrad Vacuum technology

- have capabilities covering all areas starting from a standard flange up to designing a complete vacuum system,
- manufacturing, repair and after sales service of vacuum equipment,
- are experts in TIG-Laser and Microplasma welding en He. leak testing $<1 \times 10^{-10}$ mbar l/sec.,
- have our own production and an AutoCad design office in Holland and in the Far East,
- make "Custom made specials" according customer drawing in our own workshop,
- supply the following products: CF-KF and ISO vacuum components – Electrical feed throughs – Linear/Rotary Feedthroughs – Edge welded bellows – Isolators – View ports – Fiber Optics – Glass to Metal seals – Manipulators – Ferrofluidics feed throughs – All Metal Valves – Angle Valves – Gate Valves – Ion, Triode and Titansublimation pumps – Cryopumps – Cryostats

Hositrad Vacuum Technology represent:

Ceramtec – Ceramic-to-metal sealing technology. Hermetically sealed electrical & optical components include feedthroughs, multipin connectors, coaxial conenctors, thermocouples, isolators, viewports and accessories. These components are ideally suited to support optical, gas, liquid, power, instrumentation and sensing applications.

ColdEdge Technologies – provides custom $<4\text{K}$ to 1000K closed cycle cryostats with interfaces.

Extrel – Extrel is the world's leading manufacturer of Research and Proces Mass Spectrometers, Residual Gas Analyzers (RGA's), Quadrupole Mass Spectrometry Systems and Components.

Thermionics – Manipulators, Valves, E-Guns, Ion Pumps, MBE Systems, Mechanical feedthroughs.

References

CERN, DESY, (XFEL, EMBL, Hasylab Hamburg), Helmholtz Zentrum Berlin (Bessy, HMI), FZ Jülich, GSI Darmstadt, KIT Karlsruhe, GKSS, DLR, IPP Garching, PSI Villigen, ESA Noordwijk, ESRF Grenoble, ALBA Barcelona, FOM-Nikhef Amsterdam, FOM Nieuwegein and all Universities and Research Labs in Europe.

J.L.J. (Jurgen) Tomassen
Director

De Wel 44
3871 MV Hoevelaken
T: +31 332 53 72 10
info@hositrade.nl

Turnover: 4 M€ | 10 employees

www.hositrad.nl

VACUUM TECHNOLOGY
Hositrad



H.V.P.C.

H.V.P.C., or High Voltage Potting and Coating, is self-reliant since 2002. We are specialized in winding, assembling, potting, coating and testing of high-tech products. Being experts makes us also the best possible advisors in this field. These products are mainly for the medical- and defense industry, but we also have customers in the aviation industry.

H.V.P.C. is a dynamic production company with few hierarchical lines. These short lines result in quick settlements and a strong workforce. The workforce increased through the years from 8 to 18 enthusiastic employees.

H.V.P.C. sets high demands for its performance. The product quality, service and reliability of the deliveries are among the best in the world. H.V.P.C. logistics uses short channels and therefore purchasing activities are quick, control is good and delivery times are reliable.

Adapting to developments in the market with the help of innovative technologies and shaping an effective organization with flexible processes are characteristic of H.V.P.C. The flexible processes result in the possibilities to produce single pieces or small series.

Products

H.V.P.C. is specialized in single production or small series. H.V.P.C. produces a large variety of products (durable types), both existing as new designs, which can be realized in consultation with the client.

H.V.P.C. is a production company for mainly high-tech inductive components, such as (high voltage) transformers, choke-coils and deflection coils. Also high-tech power supplies and high-tech connectors poured into as well as oil and different synthetic materials (silicones and epoxies).

References

Thales – ASML – FEI – Selex

Gerard Bruggink

General Manager

Havenstraat 28b
7553 GG Hengelo (O)
T: +31 742 55 54 21

Turnover: 2,5 M€ | 18 Employees

www.hvpc.nl



Imtech Industry International BV

Imtech Industry International BV is an international operating technical service provider with focus on Project Development & Financing, Engineering & Contracting, Operation & Service. Imtech Industry International has employed specialism on the Power Electronics, Energy and Oil & Gas markets.

Company information

Imtech's business unit Power Electronics has more than 40 years of experience with Power Electronics. Activities within Imtech Power Electronics are conceptual- and detailed design, construction, assembly, factory testing, installation and commissioning of tailor made Energy Conversion and Distribution Systems for Scientific and Industrial applications.

Imtech, has the capabilities to develop **tailor made** Energy Conversion Systems up to the following figures:

- current: up to 150 kA
- voltages: up to 100 kV
- rated power: up to 20 MW (continuous)
- up to 150 MW (pulsed)
- frequencies: up to 100 kHz
- stability: down to 1 ppm

Our solutions find their way into various applications for:

- Enrichment processes
- Nuclear fusion research
- Particle accelerators / synchrotrons
- Galvanic industry
- Film processes
- Electricity distribution grids
- Electrolysis processes
- Fuel Cell processes
- Smart Grids
- Wind industry
- Solar industry

Some of our references:

IPP Garching (D) – 145 MVA Modular Thyristor Converter System for ASDEX upgrade
IPP Garching (D) – Extension of the Pulsed Power Supply Network of ASDEX by a set of Compact Modular Generators (8 MVA, 32 MJ)
HFML Nijmegen (NL) – 20 MW DC Thyristor Converter System – DESY Hamburg (D), Klystron modulator for the XFEL
RF station Helmholtz Zentrum Berlin (D) – 8 MW 20 kA Thyristor Power Converter System
Solvin Antwerp (B) – 1 MW PEM fuel cell conversion system

Hans Boer

Sales Manager Power Electronics

Modem 30

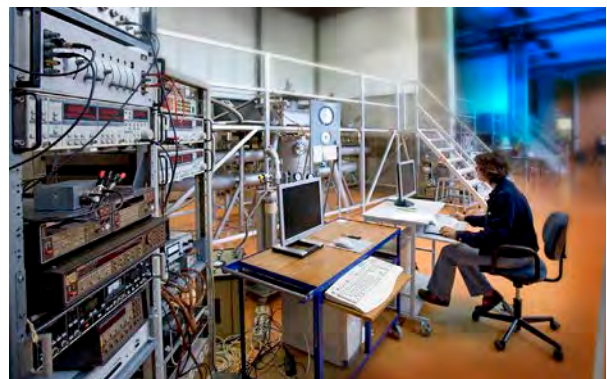
7741 MJ Coevorden

T: +31 524 59 92 25

hans.j.boer@imtech.nl

Imtech Industry International is part of the Imtech NV Group | 400 employees.

Turnover: Imtech NV 5.1 Billion € | 29.000 employees (2011)



www.imtechindustryinternational.nl



INCAA Computers

INCAA Computers is a well-established company with over 35 years experience in design and manufacture of professional high-tech electronic equipment for industry, science, and OEM. We provide solutions for technical automation projects and take system responsibility.

Product information

Applications extend from industrial and scientific scalable data acquisition systems through transient recorders, timing systems, superconducting magnet test benches and power supply control modules to alarm and safety systems.

Hardware Development: Modules can be designed from scratch or standard modules can be tailored to customers specific needs. Characteristic product properties are the high quality level and the relatively small to medium production volumes.

Software Development: Due to our in-house hardware expertise we know best to separate projects into hardware and software functions and how to interface them to build innovative fail-safe systems. Specialisations include system software, databases and graphical user interfaces.

System Integration: We not only deliver hardware modules and software packages but also integrate these with third-party components into complete functioning turn-key systems.

References

Our client base includes a wide selection of international organisations and companies:

CERN – Sincrotrone Trieste – GSI – UKAEA – MIT – FZ Juelich – Alstom – ASML

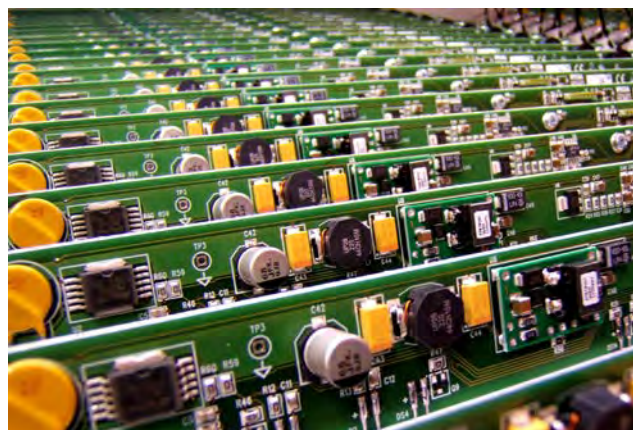
B. Sijbrandij

Project manager

Puttenstein 20
7339 BD Apeldoorn
T: +31 555 42 50 01
sales@incaacomputers.com

20 employees

www.incaacomputers.com



Irmco BV

Irmco bv has been formed in 1972.

Irmco bv developed the legendary educational toy **Sjobus**.

Irmco bv takes the lead in co-operation between reliable Dutch companies.
Heeze Mechanics, Schelde Exotech, Innovation Handling, Sunfys, TNO.

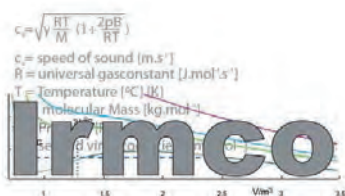
Irmco bv gathers the technology experience and know-how to design and manufacture:

- **waveguides**
- **measuring instruments based on acoustics**

Michael Koot

Director

Spoorstraat 19
4849 AR Dorst
T: +31 651 49 46 73
michael.koot@irmco.nl



EFDA EUROPEAN FUSION DEVELOPMENT AGREEMENT
FOM-Rijnhuizen
Edisonbaan 14
3438 XP Nieuwegein
The Netherlands
Modifications and transportation of the RS
ITER launcher test mock-up
International Thermonuclear
Experimental
Reactor

Vacuum tests on Dutch waveguide section May 27
First mmw test May 28 and 29 (Remote during weekend)



Vacuum tests:
1 mbar after 1 hr
Effective turbo pumping after 1.15 hrs
End pressure 5×10^{-4} mbar after 2 hrs
Expected leak at the seal surface !!!!

B.S.Q. Elzendoorn progress meeting June 22 and 23 2005

4/7-2005

Janssen Precision Engineering

Precision engineering and mechatronic solutions in ambient, vacuum and cryogenic environment.

Projects, products and services

Equipment for semi-conductor industry, astronomical instruments and research instruments. Accurate positioning and control in vacuum and cryogenic environment.

References

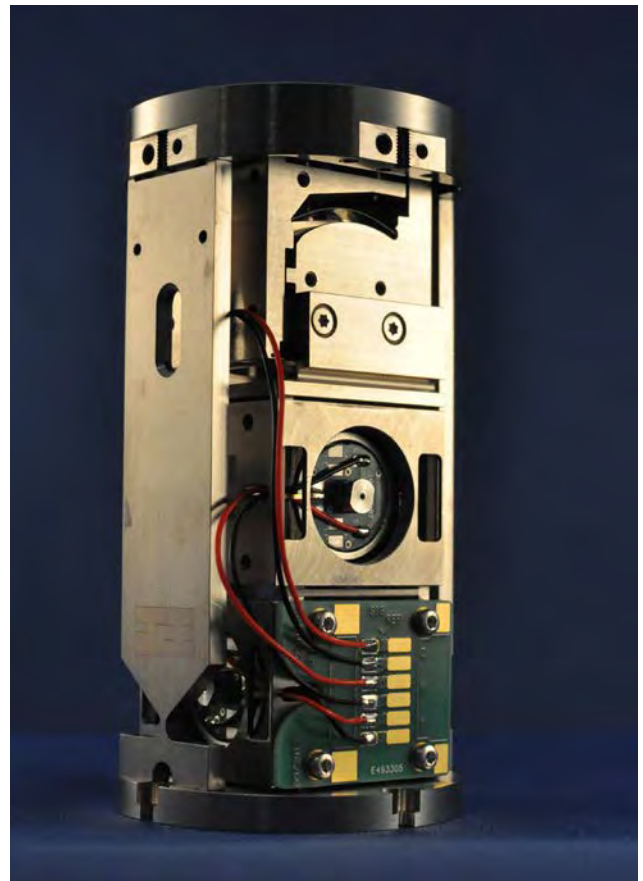
ASML – Instituto Astrofisica de Canarias – Philips – Zeiss

Huib Janssen
General Manager

Azielaan 12
6199 AG Maastricht-Airport
T: +31 433 58 57 77
huub.janssen@jpe.nl

20 employees

www.jpe.nl



Kin Machinebouw

System supplier to the industry. Long lasting experience combined with craftsmanship. Specialized in certified welding constructions and the machining thereof.

Facts

- Expert in certified welding constructions in various materials; ISO 3834-part 2 and PED module D certified.
- Modern machining capabilities: boring 1.5x 1.5mtr, milling upto 4,5 mtr, horizontal turning up to 8 mtr, vertical upto 6mtr.
- Experienced engineering capable of co-ordinating large projects (up to € 3 mio).
- Experienced in the assembly and project co-ordination of complex machines.
- Extensive network of sub-contractors.

Industry served

Special machines and apparatus for e.g. Defense, Nuclear, off-shore, food and aviation industry. Supplier of pressure vessels, lifting and towing equipment and amusement rides.

Pim Buters

Sales

Stedenbaan 15

5121 DP Rijen

T: +31 161 24 47 50

p.buters@kin-machinebouw.com

www.kin-machinebouw.com



Overview of companies

	*	Specialit		Management/ syst eng
		Discipline	Technique	
3D-Metal Forming			Explosive forming	
3D Worknet			3D printing	
Actemium E&A	L			
Advanced Solutions NL	V			
Amstel Engineering BV	M	Mechanical Engineering	3d Design & Drafting	
Amsterdam Scientific Instruments	S		X-ray detector	
Bayards Aluminium Constructions	M			
Bodycote	M		Brazing	
Boessenkool	S			
Carl Zeiss			Measuring machines	
Ceratec Technical Ceramics BV			Ceramics	
CryoZone	S			
DARE			EMC	
DeMaCo Holland BV	M			
Demcon	M			
DotX Control Solutions BV	V		Control	
Dutch Space	M	Space		x
ECM Technologies	S		ECM	
EKB	M		Ind. Automation	
Heemskerk Innovative Technology	S		Remote handling	
Heeze Mechanics	S		Waveguide	
Heinmade	S		Piezo	
Hitec Special Measuring Systems	S		Current measuring	
Hositrad Team	S			
H.V.P.C.	S		High Voltage Potting and Coating	
Imtech Industry International	L		Tailor made power conversion systems	
INCAA Computers	S			
Irmco BV	V		Acoustics	
Janssen Precision Engineering	S			
KIN Machinebouw				
Landes High End Machining BV	M			
MI-Partners	S			
Mogema BV	M		Welding	
MTSA Technopower	S	Nuclear		
National Instruments	L			
Nedinsco		Photonic		
Omics2image	V		Biomolecular imaging mass spectrometer	
Peter Haak Productontwikkeling	V			
Precision Mechanical Prod.		Ultra precision		
S&T	S			
Schelde Exotech	M			
Single Quantum	V		Single quantum detector	
Stirling Cryogenics	M			
Sumipro	S		Optics	
Tebulo Engineering BV	M		Prod. machinery	
Tebunus Tube Bending			Tube bending	
TechMasters BV				
Technobis Group	S		Fiber	
Tessella	M	Space		
TNO	L	Space	Optics	
Tree C	S		Virtual reality	
Vacuüm Specials	S			
Van Halteren	M			
VDL Enabling Technologies Group	L			
Veenstra Glazenborg	S			
Velmon Lastechniek	S		Welding	
Vernooy	M			
Wijdeven Group	M		Trans-formers	
Xpress Precision Engineering BV			Hi precision metrology	

* V= Very small 1 - 5; S = Small 5 – 50; M= Medium 50 – 250; L= Large >250

Development	Engineering	Production	Test	Area						
				Metal		Mechatr.	Cryo	Vacuum	Electronics	Software
				Large	Small					
	x	x		x						
x	x	x	x			x			Digital	x
x	x									
x	x	x	x		x	x				
x	x	x								
x	x	x		x	x					
x	x	x		x	x					
	x	x		x						
x	x	x								
x	x	x					x			
x	x	x	x						RF Analog	
x	x	x					x	x		
x	x	x	x			x				
x	x		x			x				x
x										
x	x									x
x	x	x				x				
x	x	x	x			x				
x	x	x	x							
	x	x	x					x		
x	x	x	x						Power	
x	x	x	x						Anal/Digital	x
x	x	x	x							
x	x	x	x		x	x				
	x	x			x					
x	x	x		x	x	x				
	x	x		x	x			x		
	x	x	x			x			power	
	x	x	x							
x	x	x	x							
x		x								
	x	x		x						Modelling
	x	x		x						
x	x	x	x				x			
x	x	x	x							x
x	x	x				x			An/Dig/Power	
x	x	x								
x	x					x				
x	x	x				x				
	x	x	x							x
x	x	x	x			x				
										Simulation
x	x	x						x		
	x	x		x	x					
	x	x	x	x	x	x				
	x	x	x	x	x					
x	x	x	x							
	x	x	x					x		
x	x	x	x						Power	
x	x	x	x							

Landes High End Machining

Reliable supply of mechanical parts ready for assembly is the core competence of Landes High End Machining. Landes incorporates 30 years of experience in the manufacturing and on-time delivery of complex and/or accurate components for high end industries. Products are realised by means of CNC-turning, CNC-milling and CNC-measuring. This privately owned business was established in 1985 and has demonstrated consistent growth in turnover and technology development over the years. Landes currently employs approx. 50 employees and is both ISO 9001 and AS-9100C certified.

Capabilities

The capabilities within Landes range from the industrialisation of new components and qualification of manufacturing and outsourcing processes as well as high end machining of titanium (all grades), aluminium and high alloy steels. Manufacturing activities may include special processes like heat treatments, surface treatments, finishing and cleaning with the aim to deliver components that are ready for next higher assembly. The dimensions of Landes in-house manufacturing go up to 1000 x 1000 x 1000 mm. Documentation and traceability are an integral part of the quality management system within Landes.

Products

Structural parts, precision components, turbine components, landing gear components, interior components, frames, housings, limiters, rotation parts, pick- and place components, etc.

Markets

Aircraft- and Space industries, Defence (land systems, naval systems, air bound systems), Semicon industries, Optical industries, Medical equipment, Offshore industries, Special machinery.

References

Fokker, Airbus, Marshall Aerospace, General Electric, Stork, Pratt & Whitney, VDL, Siemens, Fresenius etc.

Certification

ISO-9001, AS-9100C

Peter Boogaart

Sales Manager Aerospace & Defence

Magelhaenstraat 15
7825 VL Emmen
T: +31 591 63 53 94
Peter.Boogaart@landes.nl

www.landes.nl
Landes
HIGH END MACHINING



MI-Partners

Innovative High-End Mechatronic Solutions

Our company

MI-Partners is your contract R&D partner for the development of high-end mechatronic systems. Offering the complete cycle of predevelopment, design, realization and testing of high-tech systems, MI-Partners can assist you in your development efforts. MI-Partners uses a compact and highly educated team which results in fast solutions that work. Operating in a wide variety of market sectors results in solutions that characterize themselves as fresh, innovative and out-of-the-box. Choosing MI-Partners means choosing for open communication throughout your project, profiting from the mechatronic approach and reaching your goals on time.

Our competences

To assist in developing mechatronic total solutions, MI-Partners has a high level of knowledge of the customary mechatronic disciplines and competences at its disposal:

- Design principles for precision engineering
- (Advanced) motion and equipment control
- Predictive modeling (dynamic/thermal)
- Dynamic error budgeting
- Floor vibration isolation
- Air bearing design
- Design for vacuum/contamination
- Magnetically levitated systems
- Optics
- and of course:
- Project management
- Customer focus
- Cost awareness

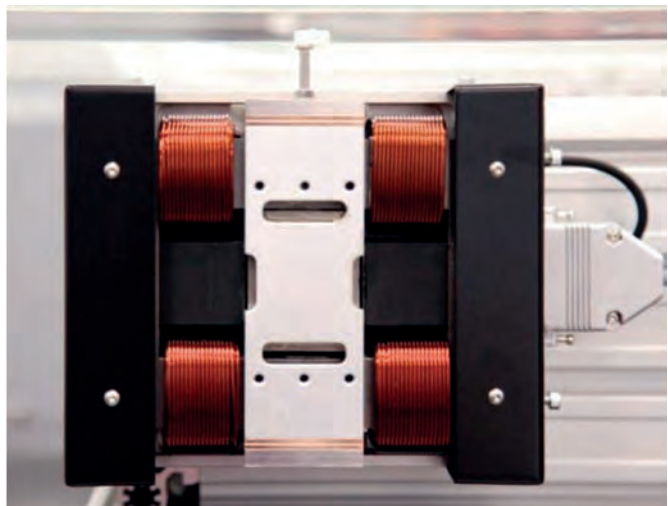
Leo Sanders

Director

Dillenburgstraat 9N
5652 AM Eindhoven
T: +31 402 91 49 26
info@MI-Partners.nl

30 Employees

www.MI-Partners.nl



Mogema 3.0 |

The combination makes the difference

Mogema 3.0 is high-tech expert in welding, machining and vacuum technology. This unique combination of activities is what makes the difference: we are your partner right through from development up to and including delivery of the complete module.

We specialise in complex and large vacuum chambers and vacuum systems. Our expertise in welding, machining and assembly comes into its own for the manufacture of vacuum chambers.

Production techniques

Precision welding

- Wide choice of materials
- Broad range of sizes over 9000 mm
- Specialized production

Advanced machining

- Extreme accuracy to within hundredths of a mm
- Acclimatized production
- Enables highly accurate machining

Critical assembly

- Meeting every need

Our commitment to innovation and our belief in the importance of ongoing development is reflected in our investment in new techniques and expertise, as well as our partnerships with scientists and involvement in academic projects.

Michel Kurstjens

Managing Director Sales

Industrieweg 9
8084 GS 't Harde
T. +31 525 65 15 33
info@mogema.nl

www.mogema.nl

mogema3.0



MTSA Technopower

MTSA Technopower designs and builds customer specific equipment, installations and machines. MTSA Technopower has own products which are used for switching high power at short circuit laboratories and atomic fusion. MTSA Technopower offers production capacity (manufacturing and assembly) and on-site service.

Product information

To initiate the atomic fusion process large amounts of energy need to be applied in a controlled manner. MTSA Technopower developed high power switches to make or break a high current at the right moment. Typical products we supply:

Make Switches – Safety Break Switches – Separators – Rogowski measuring systems

This type of equipment is being applied at KEMA, JET and various other short circuit laboratories, e.g. KPT, Toshiba, EETI, KERI and Ormazabal.

In addition MTSA Technopower designs and builds customer specific equipment, installations and machines. Within the nuclear sector we acquired a great deal of experience by taking over KEMA Techniek in 2003 and close relations we maintain with scientific institutes within the Energy Sector like ECN, NRG and TNO. For the nuclear sector we designed and built for instance:

Special remote handling systems for application in radio active environment – High power switch systems – Gas dosing systems – Special machines – Prototype installations – (Spare) Parts and modules/subsystems

Customer specific projects can be divided into the following stages, whereby we can join at any level:

Concept engineering – Basic engineering – Detail engineering – Procurement and manufacturing of parts – Assembly – Testing – Installation and commissioning – Maintenance

Rob van der Sluis

Manager Marketing & Sales

Westervoortsedijk 67
6827 AT Arnhem
T: +31 263 63 63 10
rob.vandersluis@mtsa.nl

70 employees

www.mtsa.nl



National Instruments

Committed to Engineers and Scientists - Since 1976, National Instruments has equipped engineers and scientists with tools that accelerate productivity, innovation, and discovery. NI's graphical system design approach provides an integrated software and hardware platform that simplifies development of any system that needs measurement and control. Engineers and scientists use this platform from design to production in multiple industries, advanced research, and academia.

Accelerate Development - Engineers accelerate their development using highly productive NI LabVIEW software that integrates and abstracts the complexity of systems at multiple levels, including unprecedented visualization of system timing. They can lower total systems cost, increase flexibility, and integrate new technology easily using off-the-shelf customizable hardware that meets system needs from low power to high performance.

Innovate Fast - The flexibility and scalability of the platform, supported by a growing ecosystem of reusable IP and applications, gives engineers a strong competitive advantage in completing more projects with less time and resources. Thousands of engineers successfully use the NI graphical system design platform today to innovate, discover, and invent their own solutions – fast.

William Baars

Area Sales Manager

Pompmolenlaan 10
3447 GK Woerden
T: +31 348 43 34 66
info.netherlands@ni.com

www.Netherlands.ni.com



Nedinsco

Nedinsco develops, designs and produces a broad range of photonic technology based systems for high-tech applications.

Nedinsco has many years of experience providing customers sophisticated systems consisting a combination of optical, mechanical and electrical technologies. Strategic partnership is a key concept in Nedinsco's approach to contemporary as well as future business.

Capabilities

With our extensive engineering and production knowledge and our state-of-the-art facilities we are providing customers with state-of-the-art and cost effective photonic based systems enabling them to become more successful.

Goal is to deliver qualified serial products and being able to manage the complete lifecycle of the product starting with a basic idea of the customer until the service and aftersales.

Products

Camera systems, spectrometers, photonic sensors, alignment telescopes, sensor platforms, bore sighting and training systems.

Markets

Diagnostics (medical, pharmaceutical, forensic, recycling and food branches), semiconductor and defence.

References

ASML – TNO – Carl Zeiss – Saab Defence and Security – FLIR

Bob in den Bosch

Manager Marketing & Sales

Jan van Riebeeckweg 5

5928 LG Venlo

T: +31 77 355 87 77

sales@nedinsco.com

www.nedinsco.com



Omics2Image

We offer you the benefits of cutting edge technology developed by the Biomolecular Imaging Mass Spectrometry group of Prof. dr. Ron Heeren at Amolf.

Our customer-focused team consists of scientists and engineers with a vast global experience. We close the gap between innovation at the frontier of science and ready-to-use products for science and industry.

With the IonPix camera molecular images are not constructed in a conventional manner point-by-point, but directly detected in the microscope mode.

Inside a mass spectrometer in a 100-200 micrometers area the molecules are removed, ionized and accelerated with a particle beam or a laser. The new system leaves the spatial distribution of ions intact while they fly through the mass spectrometer. These traveling molecular images are detected at the end of the flight tube, where arrival time and location are recorded. With the conventional detectors, this was quite complicated or it simply proved impossible. The camera is based on a chip detector that has been developed for high-energy physics at CERN, and it makes it possible to produce all molecular images with a single laser flash. Each pixel in such a molecular picture compares to 500 nanometers of tissue, and in one experiment more than 250,000 spectra are simultaneously collected. This is a major improvement in resolution and measurement speed.

The AMOLF group has deployed this new form of molecular photography among others for breast cancer research.

References

- Nikhef, NL
- AMOLF, NL
- Netherlands Proteomics Centre (NPC), NL
- Korean Research Institute of Standards and Science (KRISS), South Korea

Dr. H. R. Poolman

CEO

Science Park 105
1098 XG Amsterdam
T: +31 204 70 03 99
info@omics2image.com

3 Employees

www.omics2image.com



Peter Haak Produktontwikkeling

High Performance Sensors and Instrumentation

Product information

Our core business is the development of high performance sensors and instrumentation for scientific and industrial applications, with over 20 years experience in this field. Our expertise is primarily based in the analog electronics domain, with an emphasis on low frequency and low power. For projects that may require any external expertise, we work with a broad network of specialists, e.g. in the field of physics, data processing algorithms or ASIC design, in order to provide you with an optimal solution.

We spend substantial resources on evaluating new technologies and constantly engage with professionals from neighbouring fields to be prepared for future inquiries. Regular participation in product definition and testing of "early samples" for leading component manufacturers and exchanging the test results and insights, enables us to go "far beyond the datasheet" and push the limits with confidence.

Due to our efficient way of working we can respond quickly to customer requests, and as such we can offer rapid prototyping and notable flexibility when it comes to last minute changes.

Our solutions are used in the semiconductor industry, in scientific research (ultra-precision current measurement, cryogenic reference thermometry), healthcare (EEG, in-vivo measurements) and other sectors. Typical examples include: thermal sensors with μK stability, magnetic and capacitive sensors for sub- μm positioning, highly sensitive hybrid optical detectors, sensors for mHz range noise cancellation.

Core expertise

- high resolution and low noise circuit design: discrete, IC-based or "composite" designs and hybrid circuits
- solutions for signal integrity in a real life environment: think of $1/f$ noise, popcorn noise, thermal EMF
- extensive knowledge of electronic components, materials and processing, circuits and systems

Services offered

- product development: concepts, analysis, design, prototyping, qualification
- consultancy: component and circuit advice, technology reports, reviews
- training and support with emphasis on implementation

References

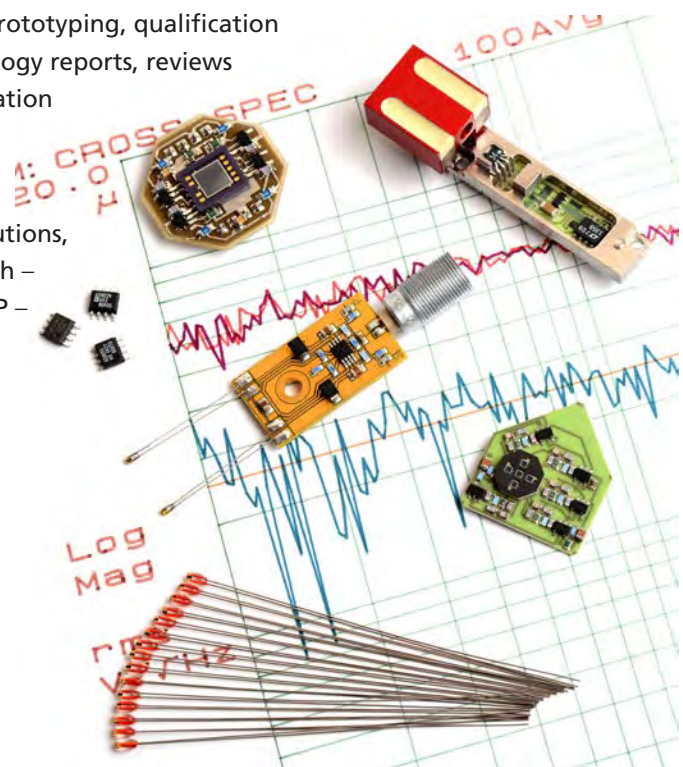
From small enterprises to large companies and institutions, including: ASML – CERN – Vistec (Leica) – SKF Research – Philips Healthcare – TNO – Nedap – Heidenhain – NXP – ABB – Shell

Peter Haak

director

Slijpersstraatje 2
5211 NC Den Bosch
T: +31 736 90 14 54
peter.haak@hetnet.nl

peter haak produktontwikkeling



Precision Mechanical Production

Precision Mechanical Production is a flexible and innovative supplier, specialized in manufacturing of ultra-precision mechanical components for the High Tech industry.

Competences

- Since its foundation in 1998, PMP works proactively with customers in both the product development and the product realization process.
- Knowledge and Skills at the highest level of;
 - developing product- and process strategy
 - tool design and development
 - CAD/CAM
 - CNC machining
 - Aukom coordinate measuring technology (3D)
- An installed base of the latest machine tools at the forefront of technology;
 - 3-axis (max.2000x800mm) CNC machines
 - 5-axis (max. cube 600mm) CNC machines with loading robot
 - 3D measuring facility.
 - technical climatized production.
- Producing accurate, complex ultra-precision parts, with tolerances in the uM range.
- From prototype, single pieces to small and medium size series.
- Materials; aluminium, titanium and super alloys.
- The active quality assurance policy together with our safeguarded processes and procedures ensure our high quality to be continuously secured.

Markets

Semicon, Analytical, Optical, Medical, Defense and Aerospace.

PMP your “Partner in Precision”

Eric Sens

COO

Mercatorstraat 15a
7131 PW Lichtenvoorde
T: +31 544 37 05 71
eric@pmp-nl.com

www.pmp-nl.com



S&T

Science & Technology (S&T) has more than 10 years experience in the development of data analysis software for both engineering- and science data. S&T's expertise is applied in a wide range of domains, including space and earth observation, astronomy, oil and gas industry, navigation, and high-tech machinery.

Product information

The objective of S&T's data processing software is to extract as much information from sensor data as possible. The data processors systems are used to wide range of applications. These applications include (i) the extraction of scientific information from sensors such as Earth Observation sensors for atmospheric research and telescopes for space research, (ii) to derive an accurate estimation of a system's health so that imminent failures are recognized before they actual take place, (iii) to derive the exact positional information using various navigational sensors. For System Health Management (SHM) applications S&T has developed the Uptime tool. This tool encapsulates the state-of-the-art SHM technology to avoid unnecessary downtime, alarm rate reduction, fault diagnosis, and the prediction of imminent failures.

Our scientific data expertise focuses on the analysis of large science data-sets, data visualisation, simulation, the development of software-pipe-line systems and calibration algorithms. The S&T expertise focuses on the (pre-) processing and visualisation of raw data and the generation of calibration key-data for level 0-1 and 1-2 data processors. In addition we develop user interfaces that allow quick-access to level 2 science and housekeeping data.

References

System health management for the ESA future launcher rocket propulsion – calibration and data-pipeline activities for the LOFAR radio telescope telescope – ITER NL vacuum leak detection and localization – data quality control toolbox (Quadas) used for ground- and space segments for missions such as SWARM, CroyoSat-2, Galileo, Sentinel-1, Sciamachy – on-ground and in-flight calibration activities for various Earth Observation missions such as OMI, GOME, Sciamachy, and Tropomi.

A. Bos
Director

Olof Palmestraat 14
2616 LR Delft
T: +31 152 62 98 89
bos@stcorp.nl

Turnover: 6 M€ | 80 employees

www.stcorp.nl

s[&t]
dependable solutions



**Uptime:
System Health Management
of Complex System**



Schelde Exotech

Schelde Exotech offers her clients design, fabrication and testing of high quality and complicated equipment. Schelde Exotech offers a wide range of products of Exotic materials like: Nickel Alloys, Copper Alloys, Cladded Steel, Aluminium, Titanium, Tantalum, Zirconium, etc.

Product information

Schelde Exotech has a rich history, based on last century companies: AKF Goes, Schelde Boiler Division and Schelde MT-Products. Schelde Exotech was founded in 1998 and is a member of the VE Group since 2009.

Schelde Exotech is specialized in the design and manufacturing of 'Special Products'.

Special components – Vacuum systems – Heat exchangers – Reactors – Pressure vessels – Airfin coolers – Gasification burners – Super heaters – Repair and maintenance in Exotech facility – Repair and maintenance at client's site/facility

Schelde Exotech has a fully staffed Design Departement and uses modern design tools like: AutoCad (2D design program); Mechanical Desktop (3D design program); Inventor (3D modeling-design program); PV Elite (ASME Code calculations, PD 5500); Scades (RToD); BabsyWin (EN 13445 Code calculations, AD 2000); Ansys.

Besides special products and services Schelde Exotech is also a reliable partner for repairs and replacement projects. Schelde Exotech has a 24/7 helpdesk when it comes to emergencies. Schelde Exotech will mobilize a repair team at earliest possible convenience, usually available within a few hours.

References

Scientific experiments – Research Institutes / Universities – Nuclear energy – Oil & Gas – Energy – Defence – Particle physics – Chemical and petrochemical industry

Arthur Borsboom

Sales Manager

Jos Mols

Managing Director

Koningsweg 2
4381 NA Vlissingen
T: +31 118 48 59 53 / +31 651 32 76 01
arthur.borsboom@exo.schelde.com

Turnover: € 20.000.000,00 |
100 employees; total capacity 240,000 man-hours

www.exotech.nl



Single Quantum

Single Quantum provides single photon detector systems for the most demanding scientific and industrial applications in the near and mid infrared. We offer reliable and easy to use complete detection systems, based on superconducting nanowire single photon detectors (SNSPD).

About us

Early 2012, Single Quantum was established as a spinoff from the Delft Technological University and scientific research funded by FOM and NWO. For wavelengths in the near and mid infrared, Single Quantum offers the best single photon detectors in terms of detection efficiency, noise levels, time resolution and reliability. We are the first company offering a complete SNSPD system with a built-in cryogenic cooler, which has the advantage of not requiring any external liquid helium supply.

Product specifications

Timing jitter: 50 ps – Dead time: <10ns – Spectral response range: 0.2-2 μm – No afterpulsing, no gating necessary

Quantum efficiency

Wavelength (nm)	Dark count rate (/s)	Quantum Efficiency (%)
800	<100	18
1310	<100	28
1550	<100	10

Applications

- Single quantum dot spectroscopy
- Photon correlation measurements
- CMOS defect analysis
- Optical quantum computing
- LIDAR
- Free space communication
- Time-resolved fluorescence measurements
- Quantum key distribution
- Optical coherence tomography

References

Heriot-Watt University – Hokkaido University – Stockholm University – Bristol University

Floor van de Pavert

CEO

Lausbergstraat 17,
2628 LA, Delft (mail address only)
t: +31 642 44 32 30
floor@singlequantum.com

6 employees

www.singlequantum.com



SINGLE QUANTUM



Stirling Cryogenics

Stirling Cryogenics specializes in standalone cryogenerators and closed-loop cooling systems. Research centers, businesses, and industries all over the world rely on our expertise to provide them with a reliable, on site, supply of gases or cooling systems for all kinds of applications.

Product information

Stirling Cryogenics operates at the cutting edge of cryogenic technology.

A recent achievement was the designing and building of a cooling system for the ICARUS project, which is being carried out by the INFN in Italy. This fully selfcontrolled system of ten 4kW cryogenerators was built to cool 400 liters of liquid Argon to exactly 94K with an uptime of 100% for at least 10 years. Stirling Cryogenics is also involved in innovative superconductivity projects such as the European Hydrogenie project, and in several national initiatives in China, South Korea, Russia, and the Netherlands.

References

ICARUS (INFN), Gran Sasso, Italy – 40 kW controlled temperature liquid Argon cooling system for large scale neutrino – Detector SNLS, Grenoble, France – 20K cooling system for packing of nuclear material R&D Power Engineering – Moscow, Russia – Controlled temperature liquid nitrogen cooling system for HTS pilot plant

Francesco Dioguardi
Commercial Manager

Science Park Eindhoven 5003
5692 EB Son
T: +31 402 67 73 00
info@stirlingcryogenics.com

57 employees

www.stirlingcryogenics.com



Sumipro

For over 15 years Sumipro supplies high precision optics for customers all over the world. Sumipro advises medical, aerospace and defense industries and designs and produces optical products and systems for them.

Product information

Sumipro realizes custom made solutions for your optical challenges: human contact lenses, optics for night vision systems or reflectors for all kinds of light sources, etc.

Consultancy and design – Sumipro offers innovative solutions in design, engineering and rapid prototyping, choosing the right optical components and creating superior optical systems. Our engineers are specialized in designing aspherical and non rotational-symmetric optic components to achieve systems with high performance and less components.

Quality optics – Sumipro develops and manufactures optical components and systems with competitive prices and a very high degree of accuracy. Our inserts have tolerances in focus lengths within 0.1% instead of the typical 1 till 5%.

Mirror optics – Sumipro specializes in aspherical and diffrax surfaces for mirrors. Max. diameter 300 mm, Material: various aluminium alloys, copper, Arcap, or other machinable materials. Applications: Space, Imaging optics and Laser applications.

Specifications for mirrors – Geometries realized: Spherical and aspherical surfaces – Fresnel and diffrax patterns – Off axis mirrors – Parabolas and ellipses.

Form accuracies in general reach PV-values smaller than 350 nm with irregularity beneath 1 fringe (633 nm), depending on material and size.

Coatings – gold, silver, aluminium enhanced or protective (non oxidizing) coatings.

Infra red optics – Sumipro specializes in aspherical and diffrax surfaces for lenses, max. diameters 240 mm, most often realized in germanium, silicon and high purity float zone silicon (HPFZ): Applications:

Night vision – Thermal imaging optics – Space applications

Specifications for IR lenses – Spherical and aspherical surfaces; Fresnel and diffrax patterns; Off axis; Parabolas and ellipses. Form accuracies in general reach PV-values smaller than 350 nm with irregularity beneath 1 fringe (633 nm), depending on material type and size. Roughness values (Ra) typically reach values of 5 nm or less.

Coatings – Lenses are commonly supplied with AR coatings, ranging from 3-5 μm or 8-12 μm or variations. Reflectivity $R < 0.5\%$ or even smaller upon request. All IR coatings are compliant with most MIL-specifications. Besides AR we can supply front sides with DLCs

Ben Lubberman

Bedrijvenpark Twente 323
7602 KL Almelo
T: +31 546 81 51 41
info@sumipro.nl

Turnover: 1.5 M€ | 9 employees

www.sumipro.nl



Tebulo Engineering BV

Engineering is the main activity of the Tebulo organization. Of the many projects which have been realized by Tebulo Engineering each year, approximately 80% is primarily engineering for the industry where innovation, development, improvement and creativity are key words.

With our engineering activities we serve the Steel-industry, Chemical and Petrochemical, Food, Public utilities, Energy companies, Nuclear-, Pharmaceutical- and the Automotive industry.

The projects relate mostly front-end engineering projects. However, parts thereof, such as studies, risk assessments, basic and detail engineering are important activities.

The projects are multi- or single disciplinary, where mechanical - and electrical engineering play a primary role. Obviously, civil and structural, Energy distribution (medium - and low voltage) Control technology, Measurement and control and Instrumentation as well as Installation technology have a share in our activities.

Beside our own control philosophy, programs are written for different manufacturer control systems and robots. Within our engineering department Turn-Key projects, where complete mechanization is developed and supplied, are of great importance. Our marking -, strapping – and de-strapping machines, which are supplied worldwide, are also part of our engineering activities.

The project-based approach ensures that projects are completed smoothly, with just ‘timed’ turn to the right disciplines.

Tebulo Engineering stands for:

“Technical experts driven by engineering”.

John van Stek

Werving & selectie/business development

James Wattstraat 25

1817 DC Alkmaar

T: +31 725 71 80 83

John.van.Stek@tebulo.com

www.tebulo.com



Technische Experts gedreven
door Engineering



Tebonus Tube Bending

Flexible With Metal vindt u terug in onze gehele organisatie.

Als klant ziet u dat terug in: korte levertijd indien noodzakelijk (veel gangbare materiaalsoorten en afmetingen hebben wij op voorraad) een zeer breed spectrum van materialen welke wij kunnen verwerken waaronder vele kwaliteiten naadloos en gelast koolstof- en roestvaststaal, koper, diverse aluminiumlegeringen en verschillende soorten 'exotische' metaalsoorten diverse andere bewerkingen kunnen in eigen beheer worden uitgevoerd.

Voor u betekent dit dat u één contactpersoon heeft voor uw complete opdracht en dat de uitvoering in betrouwbare handen is. Wij investeren continue in ons machinepark, uitbreiding van onze buiggereedschappen en in de vakbekwaamheid van ons personeel. Zo zorgen wij dat u altijd die kwaliteit krijgt waar u om gevraagd heeft.

Onze specialiteit is bocht met kleine radius wat de ontwerpmogelijkheden vergroot. Een buigradius tot 1 x de diameter van de buis is mogelijk in specifieke pijpsoorten. We buigen buizen en pijpen van 2 tot 114,3 mm diameter in staal en RVS en tot 168 mm diameter in aluminium. Levertijden tot enkele dagen bij kleine partijen behoort tot de mogelijkheden.

ir. Frank Tuin

Managing director

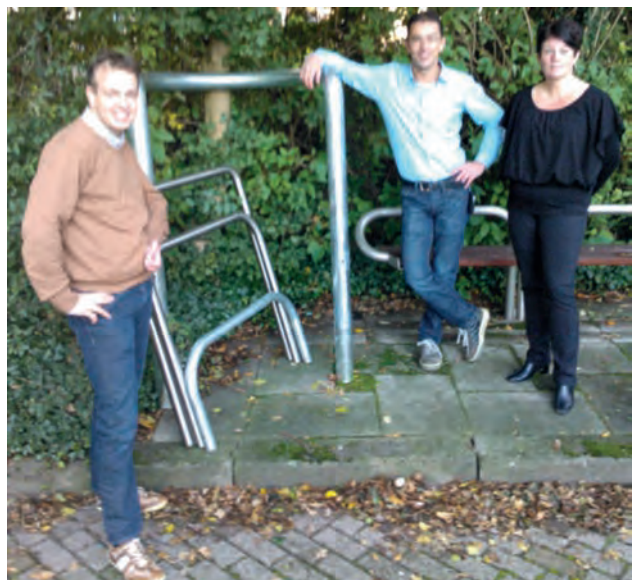
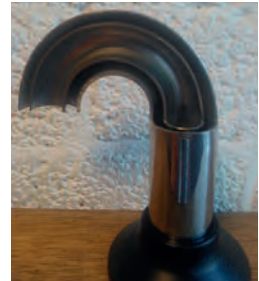
Nijverheidsterrein 11

1645 VX Ursem

T: +31 725 04 49 79

ttb@tebunus.nl

www.tebunus.nl



TechMasters BV

About TechMasters b.v.

With many years of experience in the fields of development & engineering of industrial products, test-/ calibration equipment and mechanization/ tooling, TechMasters has been appeared a valueable partner for the industry.

Our company

We are pur sang mechanical/ mechatronical developers/ engineers with a broad experience. We can act from idea up to and including delivery but also for assistance/ sub contracting in projects like (re)design, (value)engineering.

Core competences

- Precision technology
- Fine mechanics
- Vacuum & Medical technology
- Robotics & Mechatronics

Markets

- Analytical & Medical
- Science & Technology
- Semicon
- Research institutes
- Aerospace

References

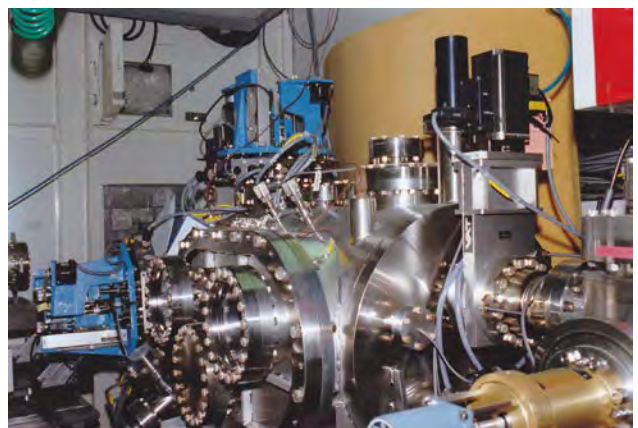
VSL/NMi – Shell – MAPPER – KROHNE – ESA/ESTEC – Fokker – TNO

Aad van Loon

CEO/dga

Noordkade 64B
2741 EZ, Waddinxveen
T: +31 182 63 15 31
M: +31 624 80 78 74
avl@Techmasters.nl

www.techmasters.nl



Technobis Group

Technobis Group is a developer and supplier of high-tech instruments and modules for the most dedicated national and international OEM companies.

Core competencies: photonics, mechatronics, assembly and testing

Technobis Mechatronics: Technobis Mechatronics specializes in complete product development projects, from the initial idea to a successful turnkey product, prototype or series product.

The main scope for which we use our technologies and competences are amongst others the complete turnkey delivery of:

- Inspection / measuring systems
 - Probe manipulators
 - Optical inspection systems
- Handling systems
 - Servo driven manipulators
 - Gripper units suitable for harsh environments, remotely operated
- Vacuum chuck units suitable for harsh environments, remotely operated
- Design and engineering of graphite, carbon reinforced carbon and other ceramic parts used for the handling of products in a harsh environment.
- Life science instruments
 - Crystallization research
 - Confocal fluorescence microscopy

Technobis Fibre Technologies

Technobis Fibre Technologies specializes in the development and supply of total solutions in high-speed, high-resolution and multi-sensor fibre interrogators and sensors.

Optical fibre sensors find widespread use in a multitude of applications due to their small size, light weight, inertness to chemical substances, ability to withstand high temperatures (~900°C) and immunity to electromagnetic interference. As a result, optical fibre sensors are frequently used for applications such as structural health monitoring, condition based maintenance and other specific sensing applications. Technobis Fibre Technologies current interrogator systems allow resolution levels ranging from 1 picometer down to 2 femtometer wavelength shifts, allowing the user to detect nano strains at speeds up to 80 kHz or higher. This is of great benefit in a large number of highly demanding applications. In order to meet growing demand from the market, Technobis Fibre Technologies has initiated a trajectory to develop Photonic Integrated Circuits for the new generation of interrogators capable of meeting at least the same specifications.

References

ASML – Fei – Airbus – Boeing – NLR – Tata Steel – Vistec – Polytec – IHC – RGS development

P.L. Kat

CEO

Geesterweg 4b
1911 NB Uitgeest
T +31 251 24 84 32
info@technobis.nl

25 employees

www.technobis.com
www.tft-fos.com



Tessella

Tessella is the international provider of science powered software technology and consulting services. World leading organizations choose our unique blend of science, software engineering and sector expertise to deliver innovative and cost-effective solutions to complex real-world commercial and technical challenges. Our people are high achievers from leading universities and are passionate about delivering value to clients; more than 50% hold PhD qualifications. We are proud that our work makes the world a better place to live in: developing smarter drug trials; preserving the digital heritage of nations across the globe; minimizing risk in oil and gas exploration; controlling the orbit and attitude of satellites; researching fusion energy.

Services

IT Consulting Tessella IT consulting services advise businesses on how best to use information technology to meet their business objectives. We provide a broad range of IT consulting skills that include: business analysis, IT strategy, supplier selection and IT architecture.

Technical Consulting With over 100 PhDs in the company, and a broad experience in academic and industrial research across a wide range of sectors, Tessella constitutes a world class problem solving engine able to bring novel ideas and innovation to your business.

Science Powered Software Development & Systems Integration has been at the heart of what we do for over 25 years. In that time we have designed, built and deployed thousands of successful software systems and IT projects, for hundreds of clients.

References

Tessella customers include: JET fusion research laboratory – ITER – TNO – Deltares – European Space Agency – Dutch Space – Rutherford Appleton Laboratory – Diamond Light Source – Akzo Nobel – Unilever – Shell – Koninklijke Bibliotheek

Eric Arends

Operations Manager

Tauro Kantorencentrum
President Kennedylaan 19
2517 JK Den Haag
T: +31 703 92 71 01
info@tessella.com

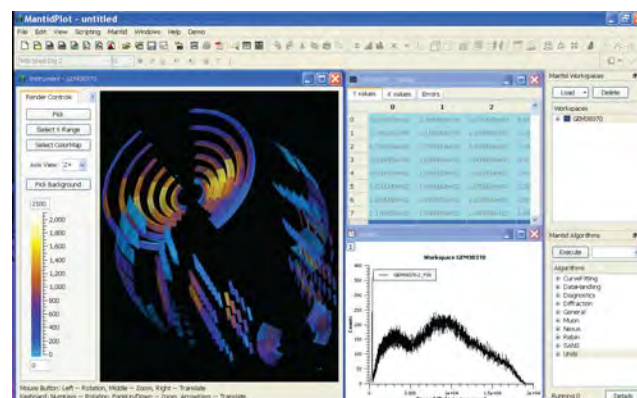
Turnover: €23M | 240 employees

www.tessella.com



"Tessella's background in science and their professional approach to system design and development means we have been able to significantly increase our overall capacity, efficiency and quality." — Aart Wismeijer, Senior Researcher, High Throughput Experimentation. AkzoNobel

"...Tessella really understands R&D users and processes. This translates into responsive levels of support, and a real appreciation for how each application can be enhanced going forward." — Pete Keeley, Innov8 Programme Manager, Unilever



TNO connects people and knowledge to create innovations that boost the sustainable competitiveness of industry and wellbeing society.

Product information

High-end Opto-mechanical Instrumentation Instruments and mechanisms for space missions and ground-based astronomy demand the utmost opto-mechanical precision and stability. TNO's unique multidisciplinary design process enables requisite picometer stability and sub-nanometer positioning accuracy.

Our instruments reflect extreme specifications imposed by hostile operation environments and ultra-high accuracy and stability.

TNO's expertise from optics to mechanical engineering, control and electronics enables the development of a wide range of complex instruments and mechanisms. Our flexure or magnetic bearing-based mechanisms have low friction and zero hysteresis. We produce quality optics with low wave-front error from a variety of materials including Aluminium, Fused Silica and Silicon Carbide.

References

TNO's experience in cryogenics is applied in HIFI for Herschel, metrology for Gaia and delay lines for Darwin.

On space activities TNO has been playing important roles in the ESO programmes VLT and E-ELT, and the ITER programmes. Important commercial customers of TNO in the field of high-end optomechanics are ASML and Zeiss.

B.C.(Ben) Braam MSc.

Stieltjesweg 1
2628 CK Delft
T: +31 152 69 21 80
ben.braam@tno.nl

Turnover: 494,6 M€ | 4,400 employees

www.tno.nl



Tree C

Tree C Technology B.V. develops 3D simulation technology and builds advanced simulators for training, procedure design- and validation, remote handling and research. We serve a wide range of international clients in the maritime, offshore construction, oil & gas, heavy lifting, dredging, nuclear and related industries as well as a large number of universities.

Product information

The success of REMOTE HANDLING will be a key factor in the safe exploitation of fusion energy. VR4Robots® offers the best combination of interactive visualization and remote handling technology to prepare and execute the demanding RH-tasks in ITER.

VR4Robots® enables you to define, visualize, animate, simulate and interact with robots and manipulators in a virtual world. The environment may include digital mockup's based on 3D CAD data. Complex 'behaviours' of robots, cameras, animations, movement constraints and collision properties can be added to the environment to improve realism. VR4Robots® is capable of handling the largest full scale mock-up facilities with the aim to prepare, demonstrate and execute remote maintenance, and to develop the remote maintenance operating procedures to facilitate development of components.

References

- DIFFER (Dutch Institute For Fundamental Energy Research), NL
- JET (Joint European Torus), UK
- Oxford Technologies, Ltd., UK
- (image Remote Handling Control Room, courtesy of Oxford Technologies, Ltd.)

Gerard Weder

Managing director

Da Vincilaan 31
6716 WC Ede (Gld.)
T: +31 318 64 87 10
info@tree-c.nl

www.tree-c.nl



VR4Robots

Vacuüm Specials

Vacuüm Specials B.V. is specialised in the implementation, construction, manufacturing of components and subsystems and the realisation of complex projects on a turnkey bases regarding Vacuum technology and Cryogenic Applications.

Vacuüm Specials prefers to work in a "Partnership" relation rather than in a strict Customer - Supplier relation.

Vacuüm Specials B.V. originated from the Vacuüm Specials branch of Leybold B.V. in The Netherlands and obtained independent status from 1 July 1997.

From its establishment in 1975, Vacuüm Specials has delivered – both in Holland and abroad and to the fullest satisfaction of its customers, a variety of projects, resulting in an expertise in the field of vacuum technology and cryogenics applications.

All company processes take place following fixed procedures in accordance with ISO 9001:2000. After having prepared a tender followed by the acceptance of a purchase order, project progress is set out in consultation with the customer in a project planning.

Hereafter engineering takes place, in close cooperation with the customer, using SolidEdge or AutoCAD. Exchange of drawing files and project communication takes place by means of E-mail.

After the drawings have been approved by the customer, production commences where quality monitoring is an ongoing process.

References

Nuclear Gas Industry (pump sets, leak testers, production machines, automatic LN2 fillings systems), ESA/ESTEC and TNO (space simulation cambers, thermal vacuum systems and LN2 filling systems), ASM (special spool pieces and traps), Omicron (Liquid Helium Cryostats for low temperature scanning Probe Microscopes), Oerlikon Leybold Vacuüm (Chambers and special products), Mapper Lithography (chambers and special products) , Zeiss (special products), Linde (LHe transfer lines) and DCA Finland (UHV Chambers up to 1000COF.

Jan Bos

Managing Director

Rosmolenlaan 3
3447 GL Woerden
T: + 31 348 43 60 80
janbos@vacuumspecials.nl

Turnover 4.9M€ | 23 employees

www.vacuumspecials.nl



Van Halteren BV

Special Projects BV Company profile

Van Halteren Special Projects (VHSP) is part of the Van Halteren Group which has the following business activities: High Voltage Products, Defence and Industrial Services. The group is an independent family owned business with production facilities in The Netherlands, Poland and India.

VHSP aims for multidisciplinary projects where competences as advanced heavy machining, certified welding, assembly and commissioning are a requirement. Our production facilities in Bunschoten comprises 12.000 Sqm. equipped with state-of-the-art machinery, a modern construction shop and conditioned measuring facilities. Our staff is motivated, skilled and very experienced.

Markets

- Offshore
- Oil, gas and mining
- Applied science
- Shipbuilding
- Defence
- Sustainable Energy

Competences

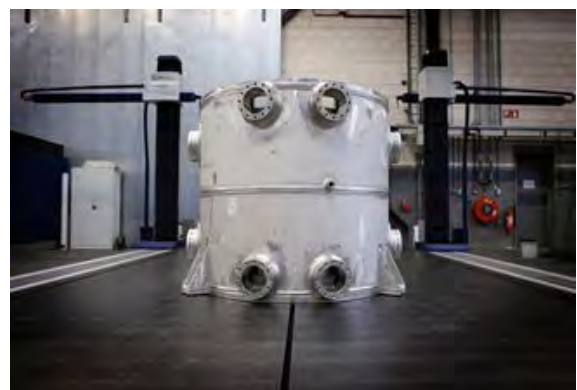
- Advanced heavy machining
- Certified welding
- Project management
- Assembly, Integration & Commissioning
- Engineering

Izaak Veerman

Managing Director

De Kronkels 27
3752 LM Bunschoten
T +31 332 99 23 00
info@vanhalteren.com

www.vanhalteren.com



VDL Enabling Technologies Group

VDL Enabling Technologies Group is a globally operating tier one contract manufacturer of parts, mechatronic modules and systems. VDL ETG focuses on long term / strategic partnerships with its customers.

Product information

VDL ETG provides solutions based on its core competences: Precision Technology, Vacuum, Material Handling, Material Positioning, and Industrialization. This throughout the entire product life cycle: basic research, prototyping, ramp-up, volume, and end-of life.

Products

Mono parts, complex high-end modules, complete (mechatronic) systems.

Markets

VDL ETG serves a number of OEM industry key segments: Semiconductor Equipment, Analytical, Medical, Solar, LED, and Science & Technology.

Science & Technology

VDL ETG is specialized in the (co)development and manufacturing of high precision parts, sub-assy's, complex modules. All products require high / ultra precision turning & milling, high-end metrology, bonding, RF testing, and heat & surface treatments. The defined production strategy determines yield, cycle time, and cost of ownership. Our strength is to rapidly translate highly innovative, complex product designs into tangible products ready to enter small series production. Typical key markets within Science & Technology: accelerator, FEL, aerospace, and instruments.

References

Semiconductor Equipment: ASML, AMAT, KLA Tencor, Cymer **Analytical:** KLA Tencor, FEI – **Medical:** Philips, Elekta, Waters – **Solar & LED:** AMAT, Veeco – **Mechanization Projects:** P&G, Kellogg's, Bosch – **Science & Technology:** ESO, ESA, ESRF, TNO, PSI, CERN

Hans Priem

Business Manager Science & Technology

Hurksestraat 13
5652 AH, Eindhoven
T: +31 653 12 67 09
hans.priem@vdlletg.com

Turnover 2011 E500M | 1750 employees

www.vdletg.com



Veenstra Glazenborg

Manufacturer of high precision mechanical equipment. Experience in milling and turning of high grade alloys and pure materials.

Product information

- Sampling probes for natural gas composition measurements (underground application)
- Die cutters for hygiene industry (HSS powder + Tungsten carbide)
- High pressure valves 10000PSI for upstream applications Highlights
- Engineering rotating equipment and production tooling
- 5 axis milling max weight 1200 kg, Machining off solid CAD/CAM
- Milling and turning max weight 5 ton, dimensions 1.00x2.50m
- 4 axis wire eroding and High speed milling max 45000-1 min
- Grinding dept. for moulds and cutting dies
- Certificates: ISO9001:2008 ; G0304 RtoD ; NEN3834

References

SCA – GasUnie – Draka – Philips – Shell – Kernfysisch Versneller Instituut

Femme Nauta

Director of sales

Zeefbaan 29

9672 BN Winschoten

T: +31 597 47 17 70

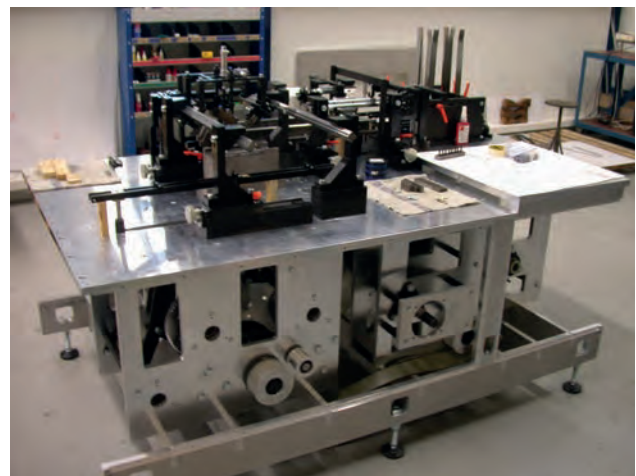
f.nauta@veenstra-glazenborg.nl

Turnover: 4.6 M€ | 38 employees

www.veenstra-glazenborg.nl



Veenstra-Glazenborg



Velmon Lastechniek

Velmon Lastechniek BV is a company for all kind of stainless steel tubes solutions. Many years of experience with cryogen-, food- and pharmacy industries. Assembly and welding in workshop and on site!

Product information

Manufacturing and orbital welding of stainless steel pipe sections and pipe joints. Orbital welding with closed chamber and open weld head, range from $\varnothing 6\text{mm}$ until $\varnothing 168.3\text{mm}$. Series from 1 – 1000+, X-rayed, pressure test, helium leak-tests (max. $1 \times 10^{-9} \text{ Pa m}^3\text{s}^{-1}$) and oxygen clean treatment. ISO 9001 and ISO EN3834 (under construction) MIG-welding (GMAW), TIG (GTAW) certificated EN287-1 and EN1418.

References

CERN – Corus steel – TEVA Pharmachemie – Trelleborg – Klinger-Picoff – Kenz-Figee – Tekoma – Cofely

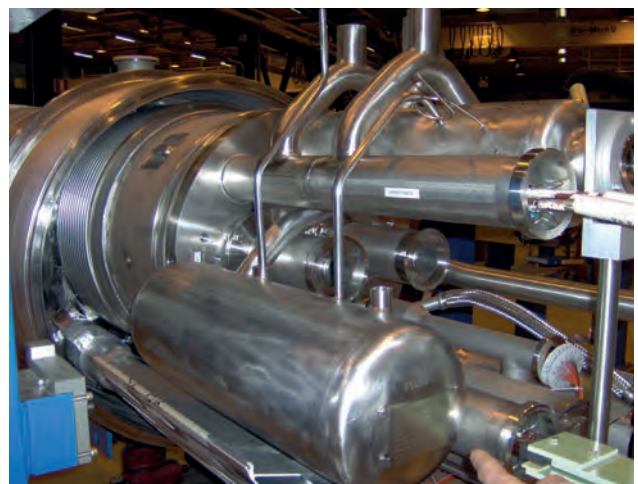
Marc Bosman (IWT)

Managing director

De Trompet 1121
1967 DA Heemskerk
T: +31 251 20 07 76
lastechniek@velmon.nl

Turnover: Velmon Lastechniek BV 1,3 M€ | 10 employees
Turnover: Velmon Group 4,5 M€ | 38 employees

www.velmon.nl



Vernooy

Vernooy is a distinguished specialist in vacuum technology and in developing and manufacturing vacuum parts and equipment.

Product information

Vernooy is specialized in vacuum engineering - process control, from design to final execution. Products are made according to customer's specifications or according to designs by Vernooy's engineers. For more than 60 years, VERNOOY Vacuum Engineering has developed and fabricated high quality vacuum- and vacuum related components for research, semiconductor, display and solar industry.

Vernooy has a balanced and sophisticated machine shop with CNC lathe and milling machines, in combination with TIG- welding and robotic welding. It offers the following capabilities:

– Milling up to 6000mm x 1600mm x 2000mm – Turning swing of 1500mm x 2000mm length – TIG Welding by hand en robot – Vacuum Leak testing – Clean room packing

All activities are executed by highly trained vacuum engineers. Flexibility and quick response are held in high esteem in the company. As a consequence of the great experience in designing, manufacturing, vacuum testing, clean room building and packaging of various vacuum components, Vernooy can be your valuable partner.

References

Vernooy realized and completed the delivery of most of the mechanical parts for Magnum-PSI for the FOM-institute DIFFER (the Netherlands). They are completely produced by Vernooy Vacuum Engineering.

Fred Verkerk

Managing director

Archimedesbaan 8
3439 ME Nieuwegein
T: +31 306 03 12 93
verkerk@vernooybv.nl

Turnover Vernooy: 4 M€ | 23 employees
Turnover Triumph Group: 20 M€ | 120 employees

www.vernooybv.nl



Wijdeven Group

Wijdeven Group is a leading Dutch company in developing, engineering and manufacturing cutting-edge magnetic fields for both motion and power generation for high-end applications.

Product information

Wijdeven Group provides innovative complete magnetic solutions building on more than 70 years of know-how and expertises in the field of advanced magnetic technologies.

Wijdeven Group develops and manufactures motion and power magnetic components, (sub-)assemblies and systems that include various coils, permanent magnets and passive components like transformers and inductors.

Wijdeven Group is a global company with her headquarters located in Oirschot (the Netherlands) and a joint venture in China, offering leadership both in costreduction and technology. In doing so we strive to provide exceptional values for our customers.

Wijdeven group is a quality company with green mindset for our environment, with both ISO9001 and TS16949 certified.

References

ASML – Philips – NXP – GE security – Thales – Honeywell – BOSCH – XEROX

Rene van den Heuvel

Account Manager – Business Unit Motion

De Scheper 303
5688 HP Oirschot
T: +31 499 32 01 30
rene.van.den.heuvel@wijdeven.com

Turnover: 20 M€ | 110 employees

www.wijdeven.com



Xpress Precision Engineering BV

Xpress Precision Engineering develops and commercializes ultra-precision metrology solutions. Our core business consists of two product lines.

First, we develop and sell products for precision coordinate metrology. This includes 3D tactile probes, controllers and nano CMMs. Secondly, we offer ultra-precision engineering services where we develop solutions for a wide range of customers, e.g. (metrology) institutes, universities, high-tech industry and manufacturers of metrology equipment. Projects usually are a combination of precision engineering and metrology / sensors / measurements.

Ultra precision metrology solutions

A good example of our capabilities is our TriNano coordinate measuring machine (CMM). The N100 model achieves a repeatability of 2,4 nm and a volumetric 3D uncertainty of 100 nm, making it one of the most accurate 3D metrology tools available. The innovative design results in a cost-efficient and highly stable machine that is capable of high speed scanning measurements. This makes TriNano the first nano CMM that is ready for industrial applications.

Furthermore, we offer various 3D scanning tactile probes. Our flagship probe, the Gannen-XP, has a 2 nm repeatability in any direction and a combined 3D uncertainty of 50nm, which makes it the most accurate 3D probe on the market. Additionally, Gannen probes can measure with spheres as small as 50 micrometer in diameter and can achieve micro Newton probing forces. The latter enables a user to measure even soft materials in true 3D without damaging them. All our probes are compatible with various CMM brands.

Ultra precision engineering services

Xpress provides advanced design and engineering services related to metrology and high-precision positioning for our customers. Customers range from global companies to start-ups and small businesses. We solve your challenge, from initial concept to prototyping, calibration and turn-key delivery.

We are specialized in: metrological design, precision mechatronics, kinematic design, opto-mechanical design and controller design.

Ernst Treffers

Director Business Development

Xpress Precision Engineering B.V.
Horsten 1
5612AX Eindhoven
T: +31 402 36 61 60
ernst.treffers@xpresspe.com

www.XpressPE.com



*ultra precision
metrology solutions
&
engineering services*

ILO's for Big Science

Name ILO / Affiliation	Email	Facility / organisation	Theme
Piet van Otterloo , Former Dutch Scientific Director, Consultant ITER-NL	otterloo@introweb.nl		General Counsel on behalf of businesses (NL hightech SME).
Toon Verhoeven (FOM-DIFFER/ITER NL)	A.G.A.Verhoeven@differ.nl	ITER (F4E) – FR JET (EFDA) – UK Asdex-U – DE Wendelstein-7X – DE IFMIF (IEA)	Fusion facilities
Rob Klöpping (FOM-Nikhef)	klopping@nikhef.nl	CERN – CH ESRF – CH ESS – SE ILL – FR EMBL – DE DESY – DE Neutrino Telescopen	Accelerator, neutron and X-ray facilities
Wilfried Boland (NOVA + ESO)	boland@strw.leidenuniv.nl	E-ELT ALMA	Optical telescopes
Emiel van der Graaf (KVI)	vandergraaf@kvi.nl	ZFEL – NL, Groningen XFEL – DE	Free electron laser facilities
Ronald Halfwerk (ASTRON)	Halfwerk@astron.nl	LOFAR – NL SKA	Radio Telescopes
Gerard Cornet (SRON en NSO)	G.Cornet@sron.nl	ESA ruimtemissies	Space observation satellites
Joost Carpay (NSO)	j.carpay@spaceoffice.nl	NSO	Space
Rik Linssen (RID)	r.j.linssen@tudelft.nl	RID TU Delft	Oyster, ionizing radiation related research, nuclear reactor
Alex Schoenmakers a.i. (NRG)	schoenmakers@nrg.eu	Pallas	Pallas reactor, medical isotope production and energy
Martin van Breukelen (HFML)	M.vanBreukelen@science.ru.nl	HFML – NL, Nijmegen EMFL – NL, FR, DE	Magnets with ultrahigh fields
Marck Smit (NIOZ)	Marck.Smit@nioz.nl		Coastal and Marine Research (including deep sea research and technology)

NOTES

This image shows a full page of blank, lined paper. The paper is white and features evenly spaced, horizontal blue lines running across its entire width. There are no margins, text, or other markings on the page.

This image shows a single sheet of white paper with horizontal blue ruling lines. The lines are evenly spaced and run across the width of the page. There are no margins, text, or other markings on the paper.

NOTES

[illegible]



Netherlands Organisation for Scientific Research



where business and science meet

www.bigscience.nl