



# Kennisbenutting in relatie tot Big Science

**Based on the case of ASI**  
(Amsterdam Scientific Instruments)

Photons

Neutrons

Ions

X-rays

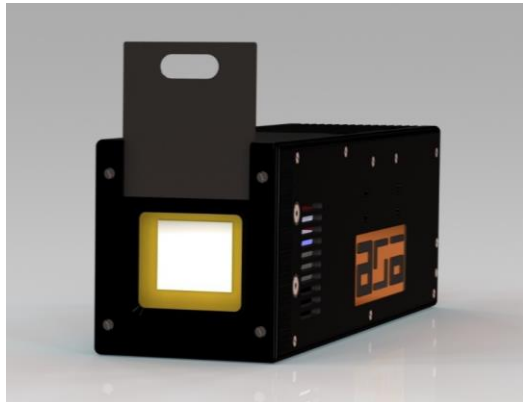
Electrons

# Products

LynX

CheeTah

TPX3CAM



X-ray detection



electron detection



Photon detection  
Neutron imaging  
Mass Spectrometry



WE ARE HERE!

Amsterdam Science Park



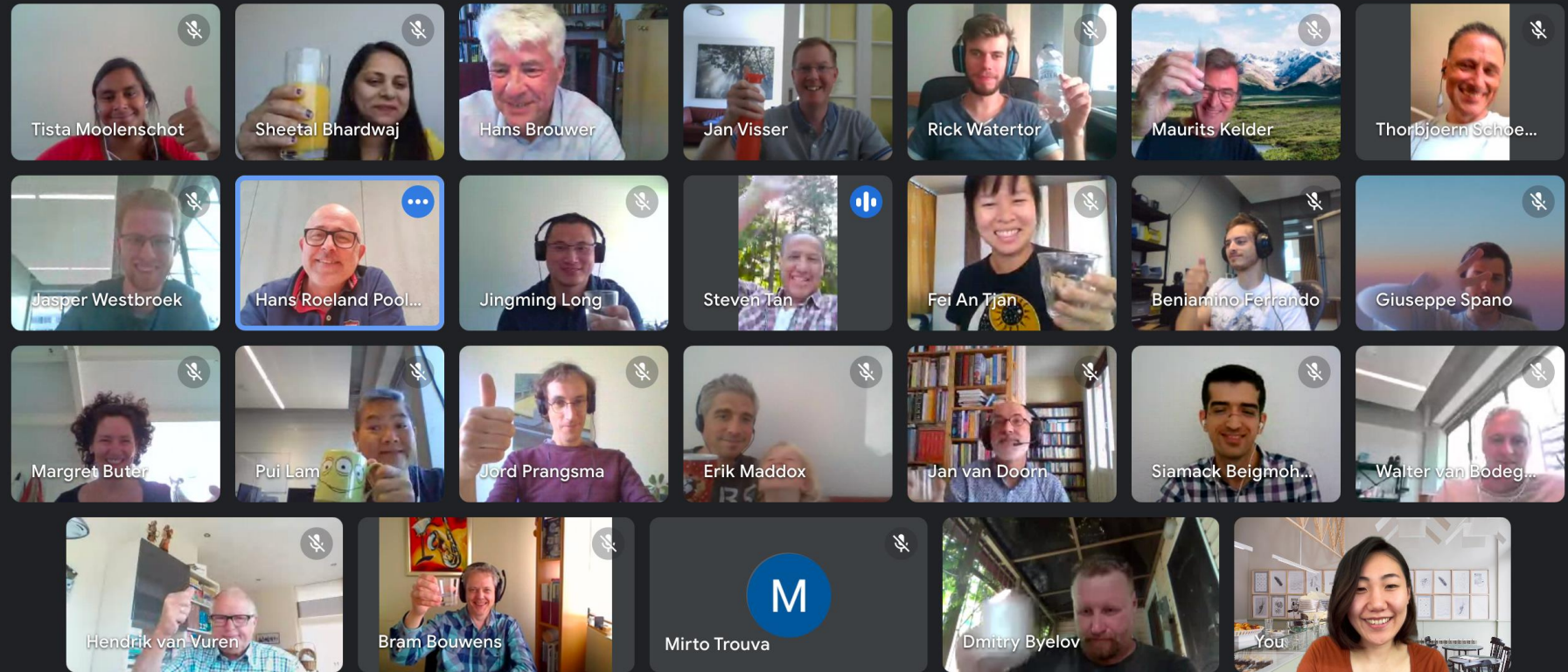
# ASI - Team

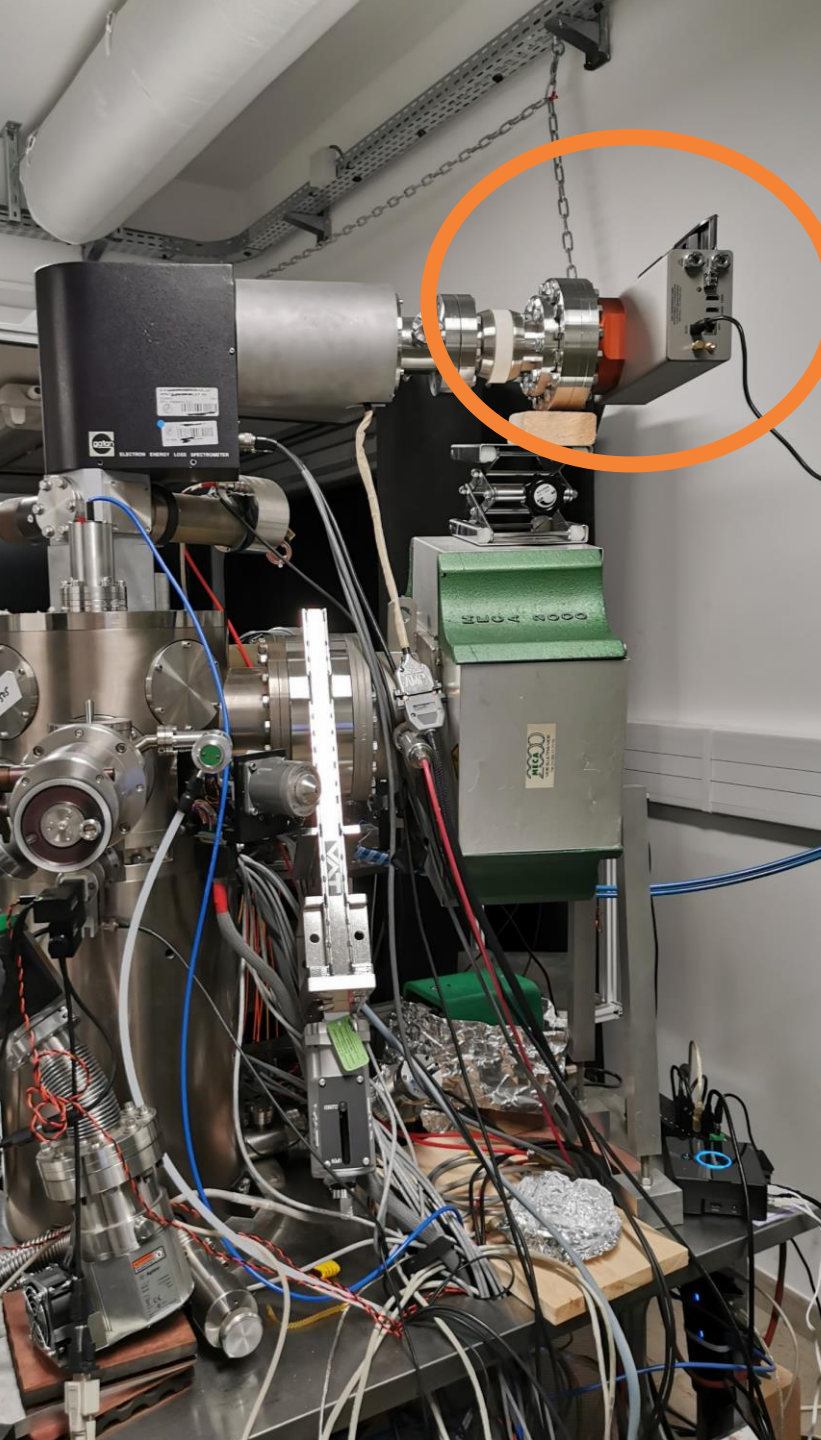
more than +30 employees  
from 10 different nations

Headquarter in Amsterdam

Offices in Germany and US

Channelpartners worldwide





AMSTERDAM  
SCIENTIFIC  
INSTRUMENTS



2011

Spin-off from NIKHEF and AMOLF in Amsterdam with CERN technology

2013

First deliveries of TPX-1 leadership detectors to synchrotron customers

2017

Commercial Restructuring under new

2018

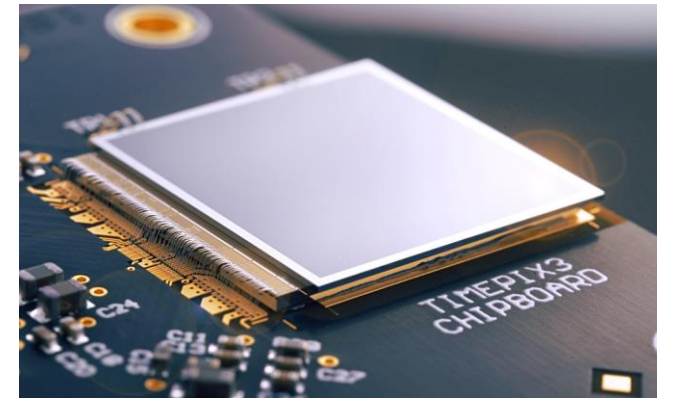
Release of TPX3CAM

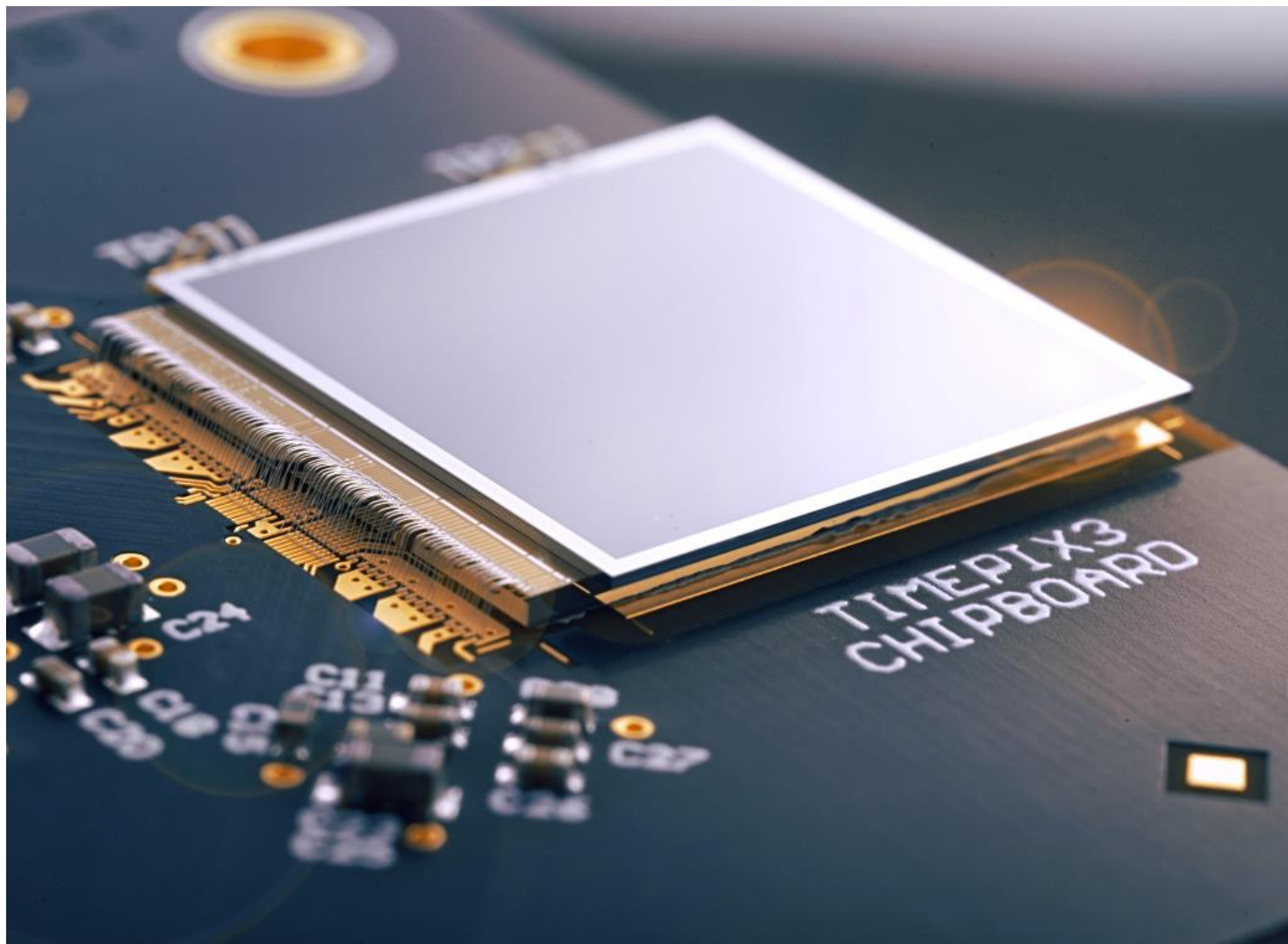
Release of CheeTah M3 and T3 Retractable

2020

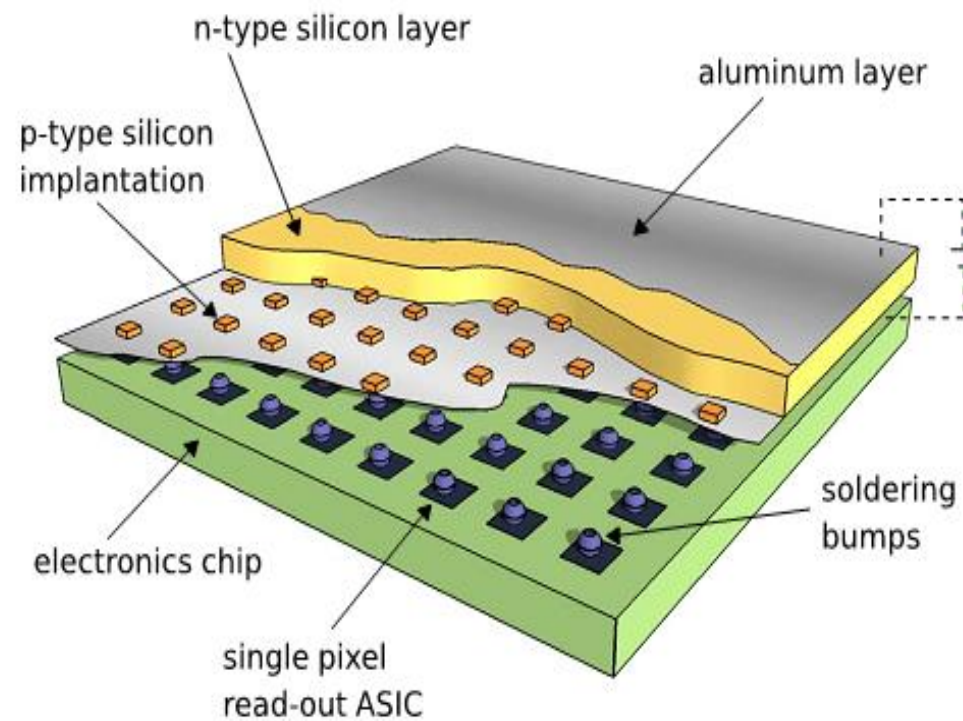
Release of CheeTah 1MP

2021





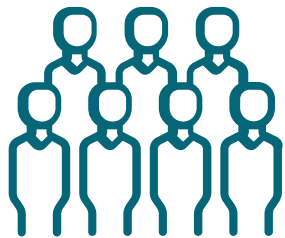
## Hybrid Pixel Detectors



- Noise Free (counting mode, thresholding)
- Ultra-sensitive (high intrinsic amplification)



# Our customers



more than **+100**  
customers world wide



We bring cutting edge  
technology from CERN to  
you!



Maastricht University



diamond

PAUL SCHERRER INSTITUT



Université de Lille



University of Glasgow



Physikalisch-Technische Bundesanstalt  
Braunschweig und Berlin



Universität  
Konstanz



Technische Universität München



TECHNISCHE  
UNIVERSITÄT  
DARMSTADT



University  
of Basel



HELMHOLTZ ZENTRUM  
DRESDEN ROSSENDORF



WASHINGTON  
STATE  
UNIVERSITY



CARL  
VON  
OSSIEZKY  
universität  
OLDENBURG



GEORG-AUGUST-UNIVERSITÄT  
GÖTTINGEN



UCC

Coláiste na hOllscoile Corcaigh, Éire  
University College Cork, Ireland



# EXPERIENCES and ADVICE

- Great technology at Institutes and Universities (young and experienced people able to play with technology)
- Involvement researcher essential (conditio sine qua non)
- License License License
- Language and worldview differ (80% of work done versus research is 1% of journey)
- Technology in search of market
- How do you get to the right people ?
- Do not be overwhelmed (just people like me and you but they took a different road in life).

# We launch high-tech startups:

- Finding technologies
- Founding & Managing Startups
- Fund for scale-up

Steven Tan & Hans Brouwer



**NASCENT**  
VENTURES

**RAPID** PHOTONICS

pepscope



vitroTEM

